

**The Village at Athlone**

Residential Development, Edmonton, Alberta

ROOITCH HEMPHILL ARCHITECTS

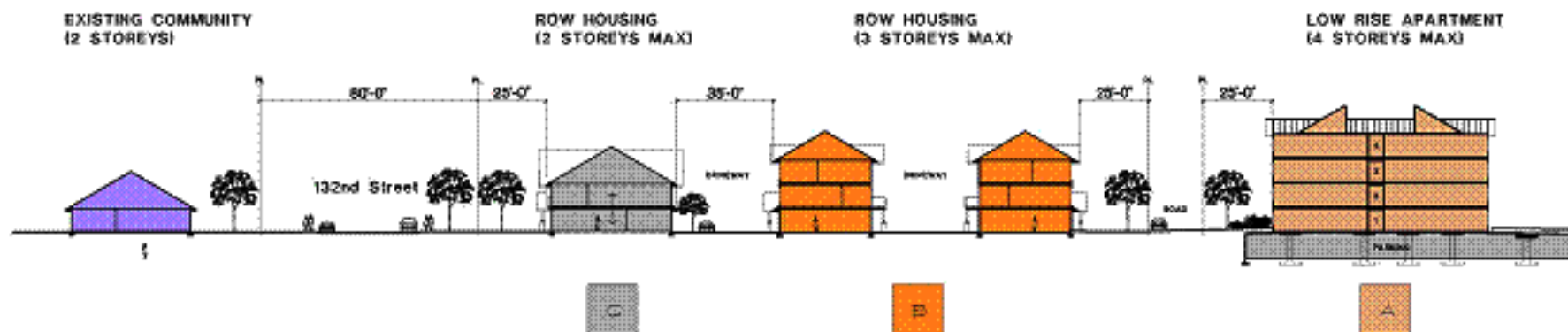
101-107 TOMPA STREET, VEGREVILLE, B.C., CANADA T9A 1A1 Tel: (403) 468-1101 Fax: (403) 468-2000

Site Plan

Scale: 1/4" = 1'-0"  
29 November 2008

413481 Alberta Ltd.  
Project No. 0328





A	BUILDING A (LOW RISE APARTMENT MAX 4 STOREYS)
B	BUILDING B (ROW HOUSING MAX 3 STOREYS)
C	BUILDING C (ROW HOUSING MAX 2 STOREYS)



**The Village at Athlone**  
Residential Development Edmonton, Alberta

ROSITCH HEMPELL ARCHITECTS  
10-1117 FORTS STREET, EDMONTON, A.L. CANADA T6A 1P7 TEL: 360-442-1111 FAX: 360-442-4000

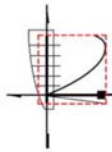
Cross Sections

27 September 2004

413481 Alberta Ltd.

Project No. 0928





*The Village at Athlone*  
Edmonton, Alberta

ROSITCH HEMPHILL ARCHITECTS  
10-120 POWELL STREET, VANCOUVER, B.C. CANADA V6A 1G1 FAX (604) 669-1091 TEL (604) 669-6002

View North Along 130<sup>th</sup> Street

413481 Alberta Ltd.

October 27, 2006

Project Number: 0516

SK-01



*The Village at Athlone*  
Beverly, Alberta

BOSTON HEMPIILL ARCHITECTS  
ARCHITECTS, INC. 1000 10th St. N. Suite 1000, Calgary, Alberta T2C 1A1

Conceptual Lowrise Residential Building Elevation

11/20/2018 12:30 PM

435-941-1111

7701 St. Albert St. N.

SK-10

Note: For illustrative purposes only