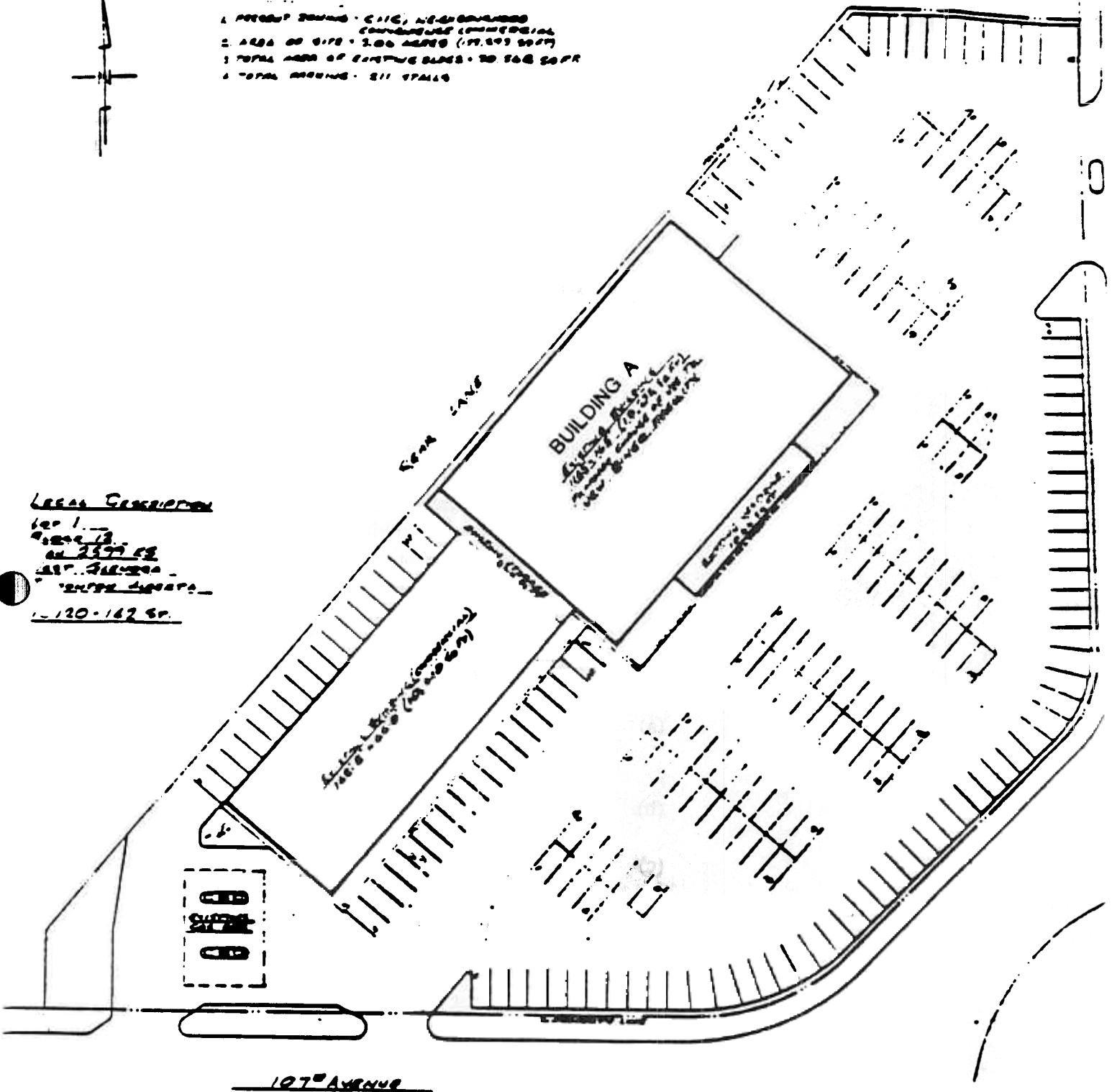


108th AVENUE

1/3/88

- 1. PROPOSED BUILDING - 2116, NE-ENCLAVED COMMERCIAL
- 2. AREA OF SITE - 2.00 ACRES (87,123 SQ FT)
- 3. TOTAL AREA OF EXISTING BLDGS - 20,548 SQ FT
- 4. TOTAL PARKING - 211 SPACES



LEGAL DESCRIPTION
 Lot 1 -
 Block 18,
 of 25th St
 2nd District
 City of Denver
 120-162 St.

SITE PLAN
 SCALE: 1" = 20'-0"
