

Certified a true copy of Appendix
 I as referred to in Bylaw No. 9107

[Handwritten Signature]

City Clerk

876

[Faded, illegible text block]

8501

1

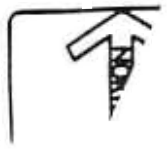
JUBILEE LODGE NURSING HOME, EDMONTON
 QUALICARE · HEALTH · SERVICES · CORPORATION

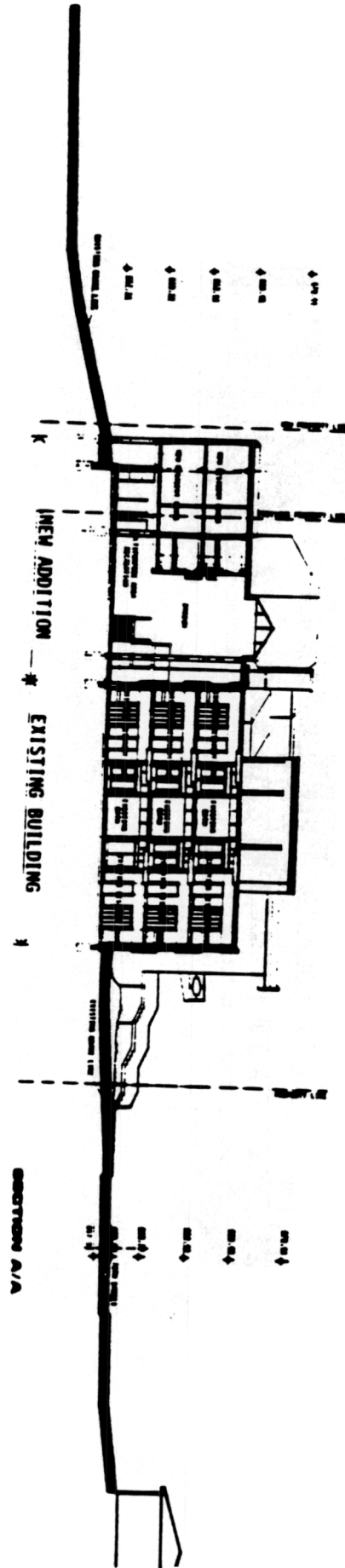
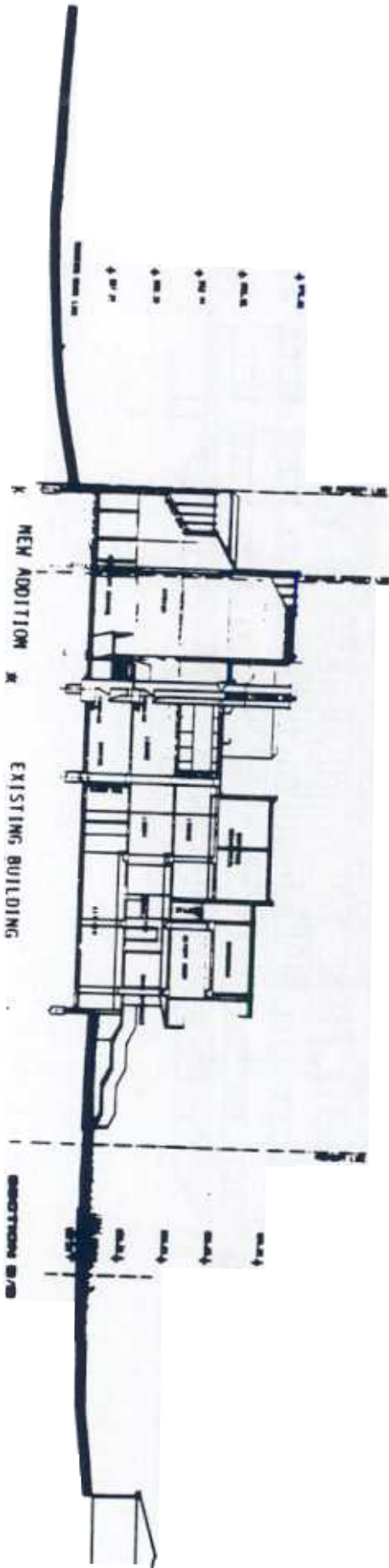
SITE PLAN

FINAL DESIGN

ROMAN M. KUATH ARCHITECTS LTD.

==





877

8501

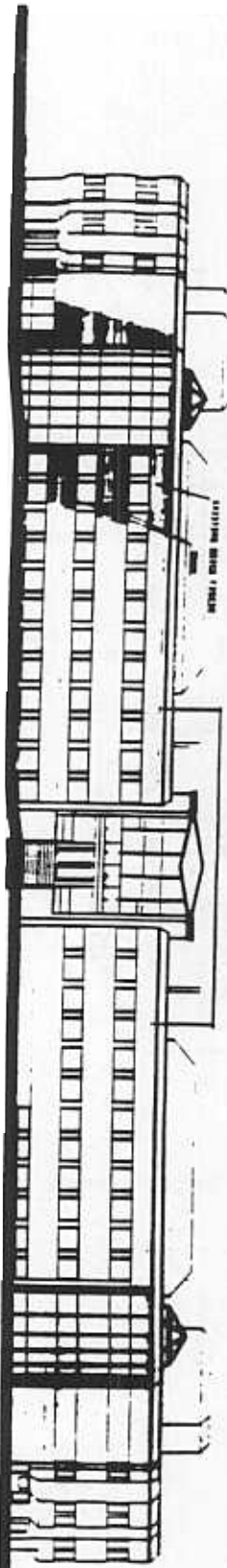
LILLEE LODGE NURSING HOME EDMONTON
 QUALICARE · HEALTH · SERVICES · CORPORATION

SECTION A/A

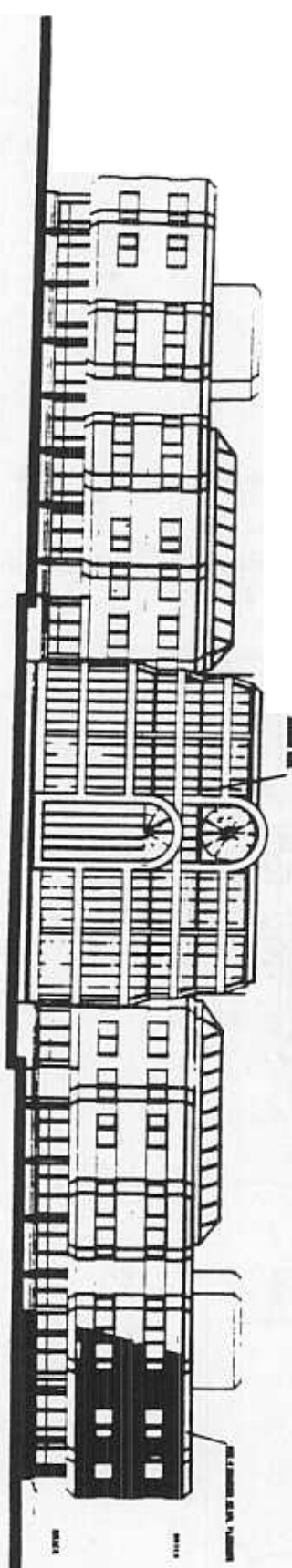
FINAL DESIGN

ROMAN M. KUJATH ARCHITECTS LTD.
 4000 100 STREET EDMONTON ALBERTA T5C 1K8

WEST ELEVATION



EAST ELEVATION



878

8501

JUBILEE LODGE NURSING HOME, EDMONTON
QUALICARE · HEALTH · SERVICES · CORPORATION

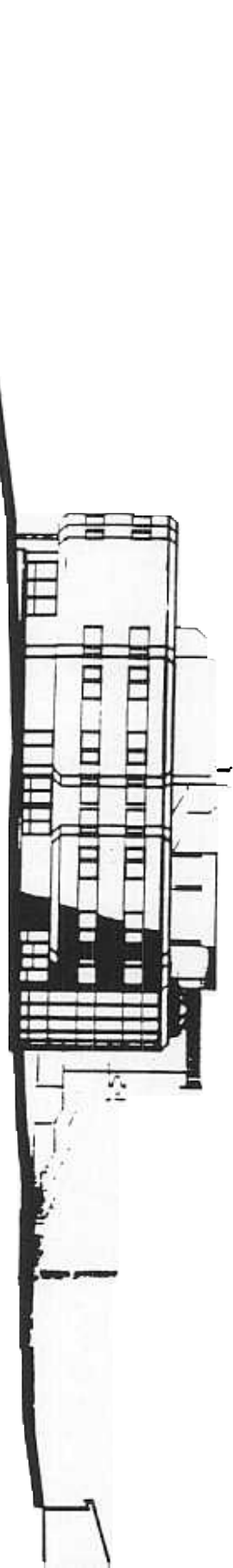
ROMAN M. KLJATH ARCHITECTS LTD.
1100 WEST 42ND STREET, CALGARY, ALBERTA, T2C 0K6

ELEVATIONS S/W

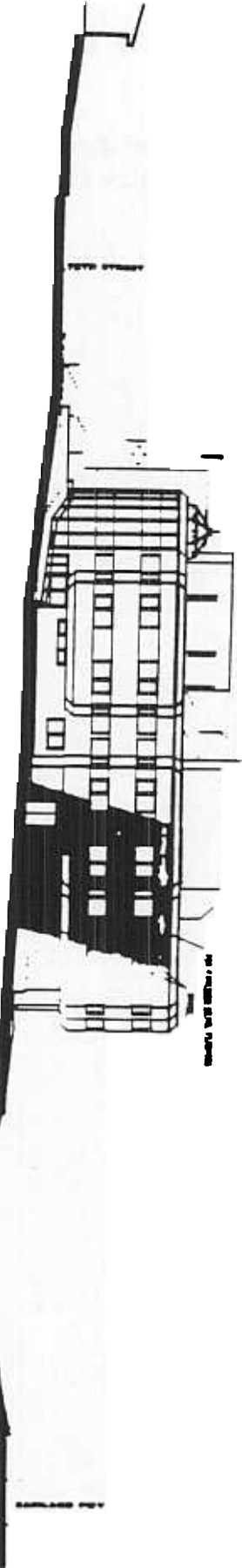
FINAL DESIGN



NORTH ELEVATION



SOUTH ELEVATION



879

8501

JUBILEE LODGE NURSING HOME, EDMONTON
QUALICARE HEALTH SERVICES CORPORATION

ROMAN M. KUJATH ARCHITECTS LTD.
11100 97 STREET, EDMONTON, ALBERTA, T6E 0E8



ELEVATIONS N/S

FINAL DESIGN

