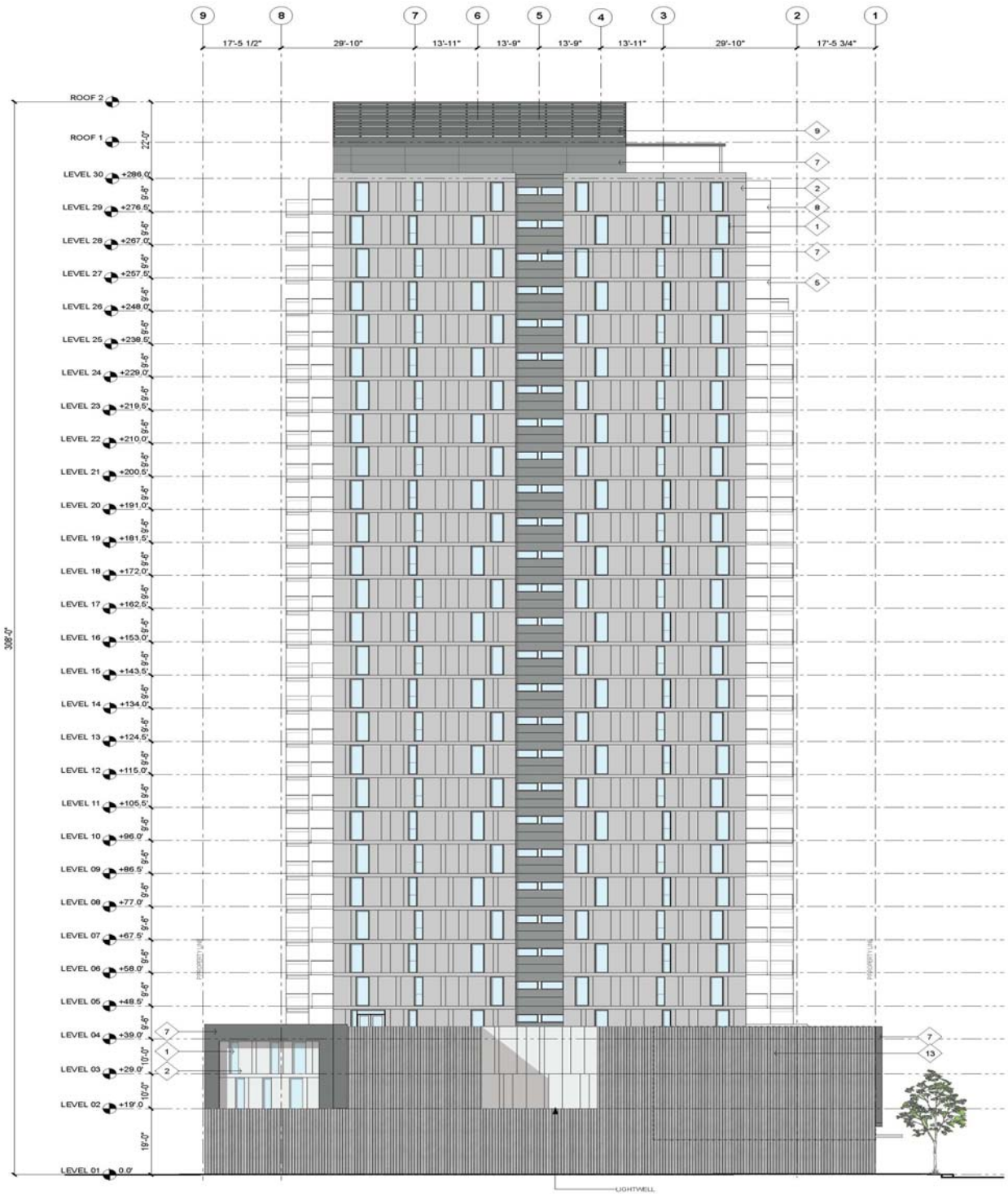


Appendix I, Illustrative Site Plan

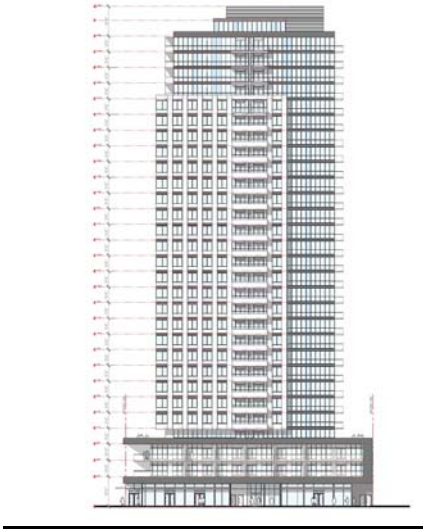


Appendix II, Project North Elevation

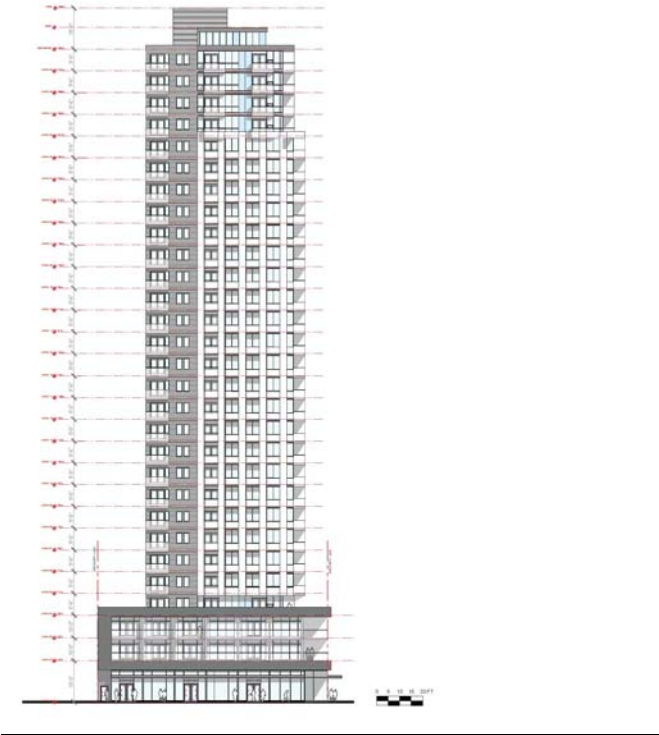


1 NORTH ELEVATION
SCALE: 1/16" = 1'-0"

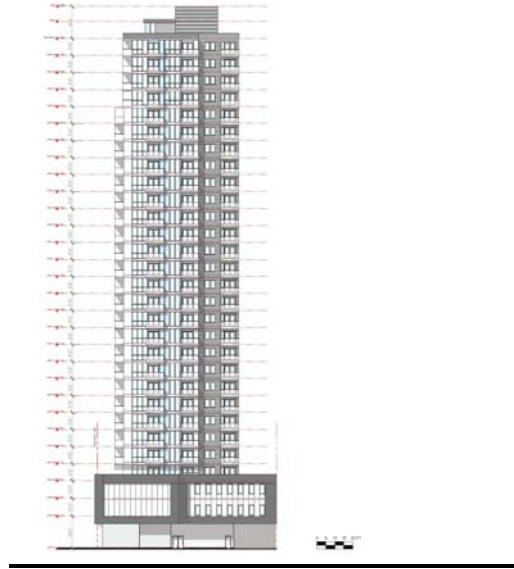
Appendix III, Project South Elevation



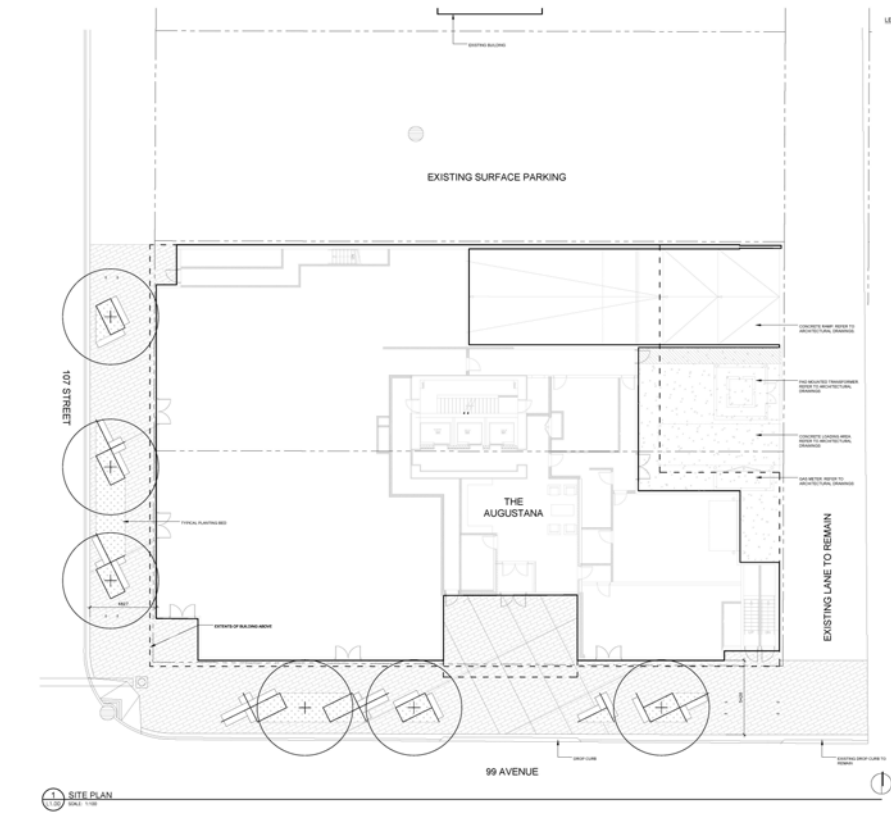
Appendix IV, Project East Elevation



Appendix V, Project West Elevation



Appendix VI, Illustrative Landscape Plan



Appendix VII: Sustainability Practices and Targets

The Development shall:

1. implement an erosion and sedimentation control plan during construction;
2. follow the Sheet Metal and Air Conditioning Contractors' National Association (SMACNA) Indoor Air Quality guidelines during construction;
3. use a high Solar Reflective Index (SRI) material for hardscape within the landscape design;
4. provide adequate day-lighting in all regular occupied spaces;
5. incorporate light controls for building occupants and shared spaces;
6. limit light trespass from the building and Site onto neighbouring properties, with the exception of adjacent public areas requiring lighting for reasons of security;
7. implement lighting that meets or exceeds the efficiency specified in the Model National Energy Code for Buildings;
8. apply efficient irrigation strategies, to reduce potable water consumption and the building shall use plumbing fixtures that use 20% less water than the water use baseline;
9. use high efficiency hot water tanks and condensing boilers;
10. include sub-metering of the suites;
11. not use CFC-based refrigerants;
12. comply with American Society of Heating, Refrigerating and Air-Conditioning Engineers (ASHRAE) ventilation rates;
13. incorporate entryway systems, new air filtration media, and CO alarms to deal with indoor chemical pollutants;
14. use Low-Emitting products for adhesives, sealants, paints, coatings and flooring; and
15. use Energy Star appliances.