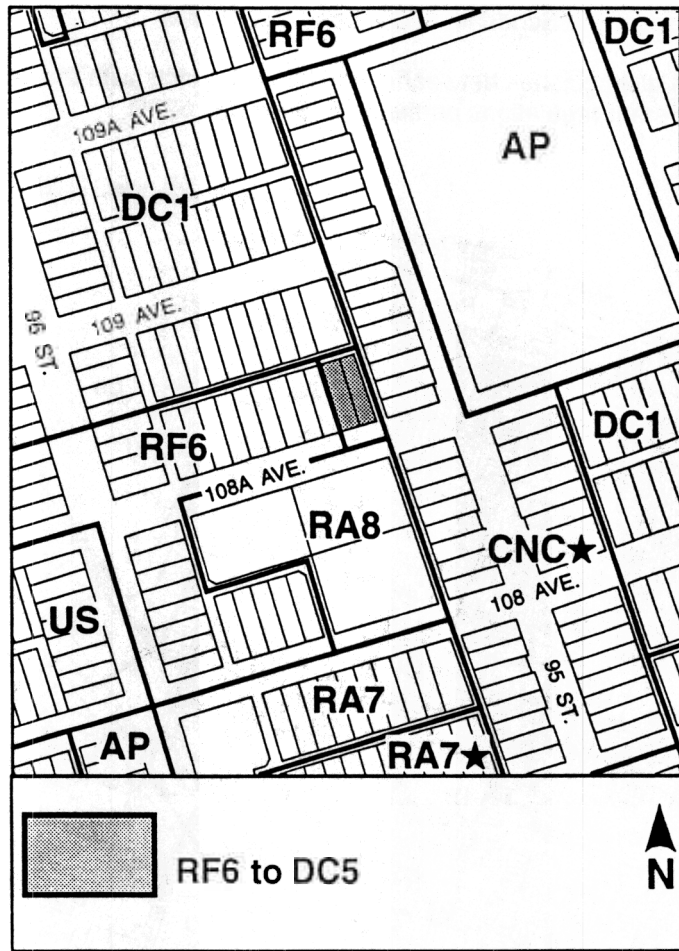
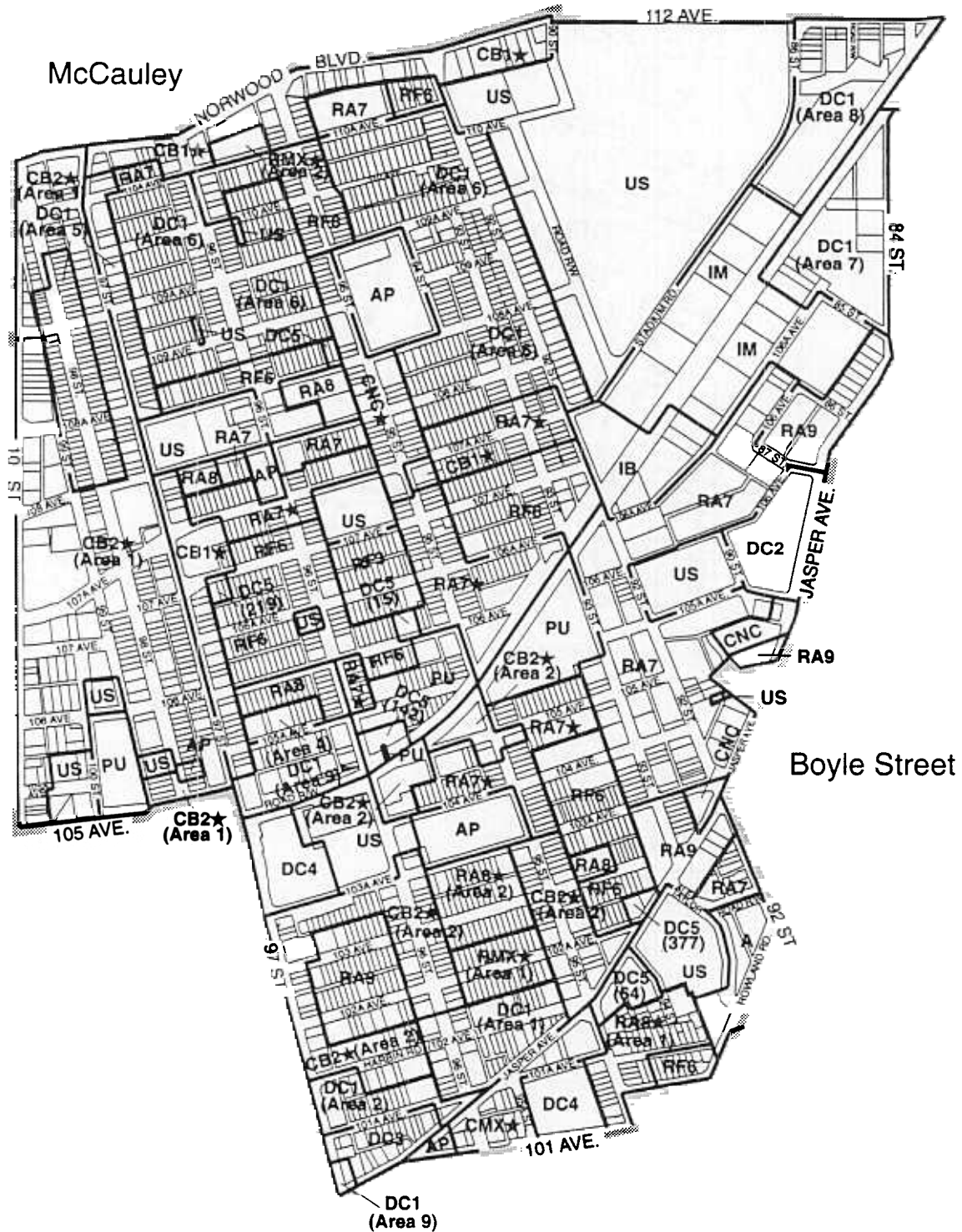


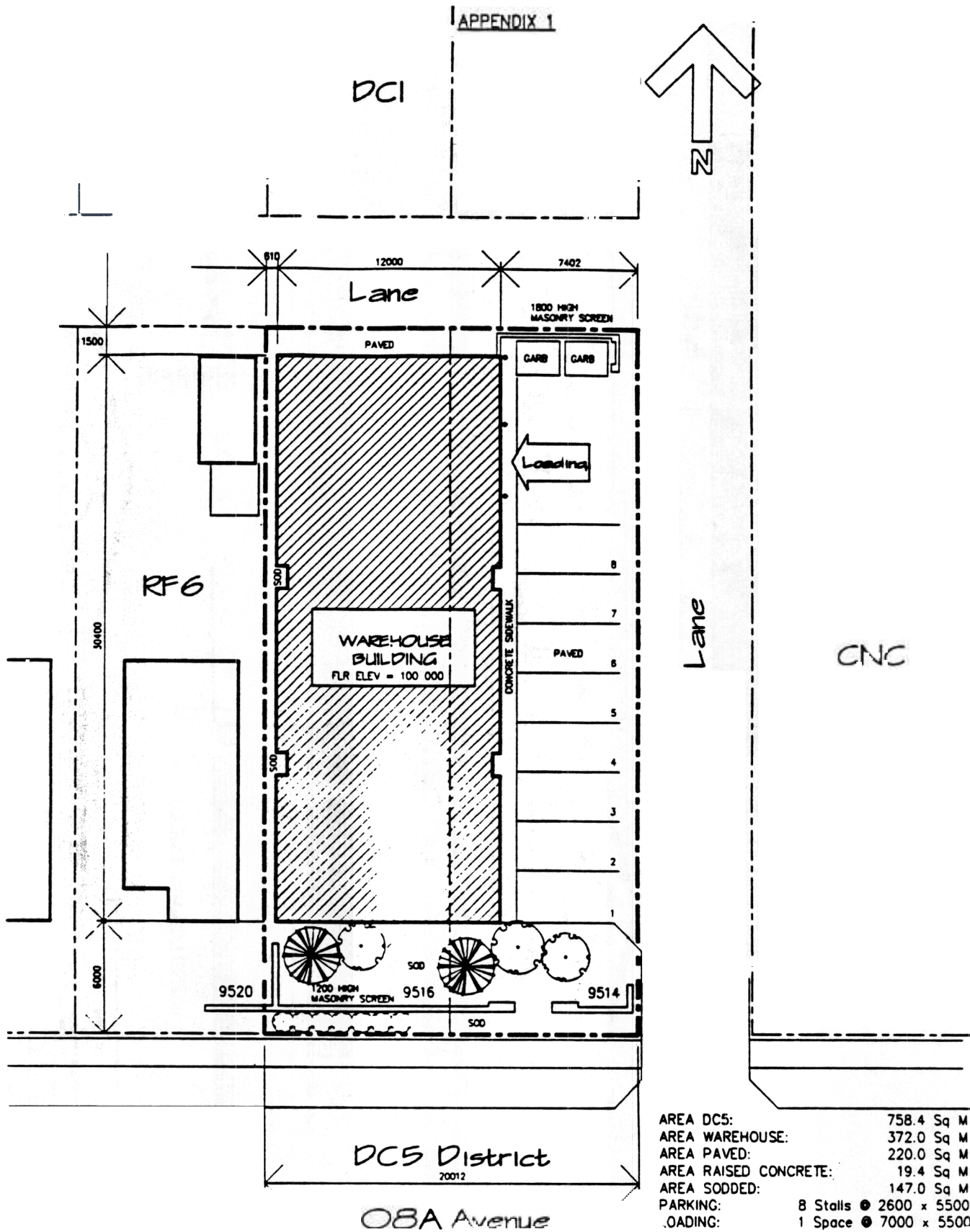
BYLAW 351



★ Designation applied to sites with altered or specified development regulations in accordance with Schedule 820D, Land Use Bylaw.

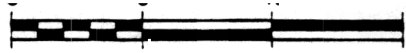
(AREA) distinguishes between areas under Districts with the same designation but with different regulations pursuant to Schedule 820D.

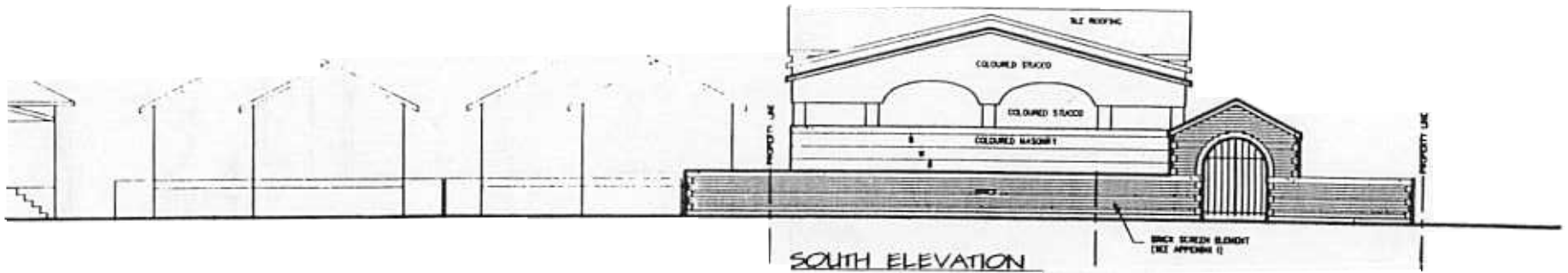




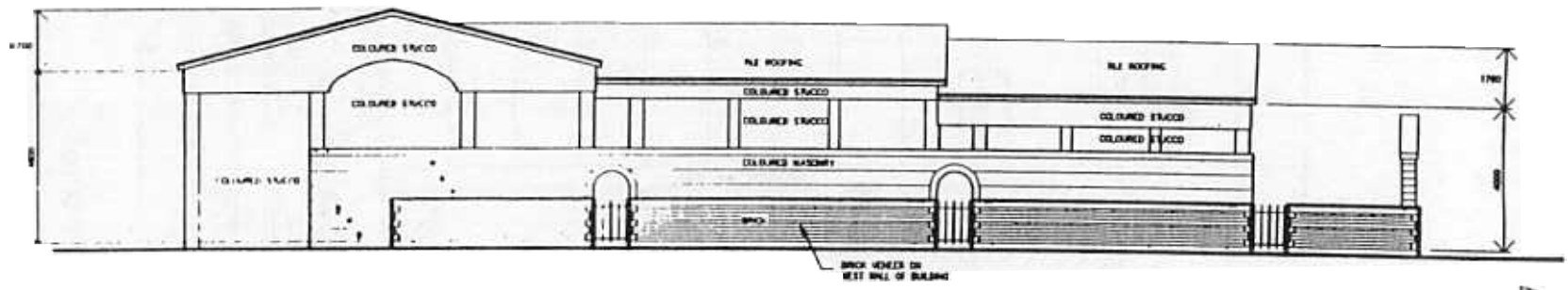
AREA DC5:	758.4 Sq M
AREA WAREHOUSE:	372.0 Sq M
AREA PAVED:	220.0 Sq M
AREA RAISED CONCRETE:	19.4 Sq M
AREA SODDED:	147.0 Sq M
PARKING:	8 Stalls ● 2600 x 5500
LOADING:	1 Space ● 7000 x 5500

Site Development Plan



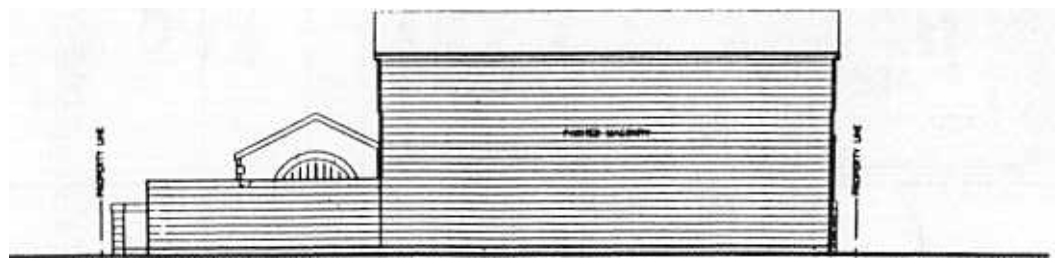


SOUTH ELEVATION

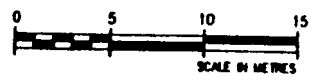


BRICK SCREEN ON WEST WALL OF BUILDING

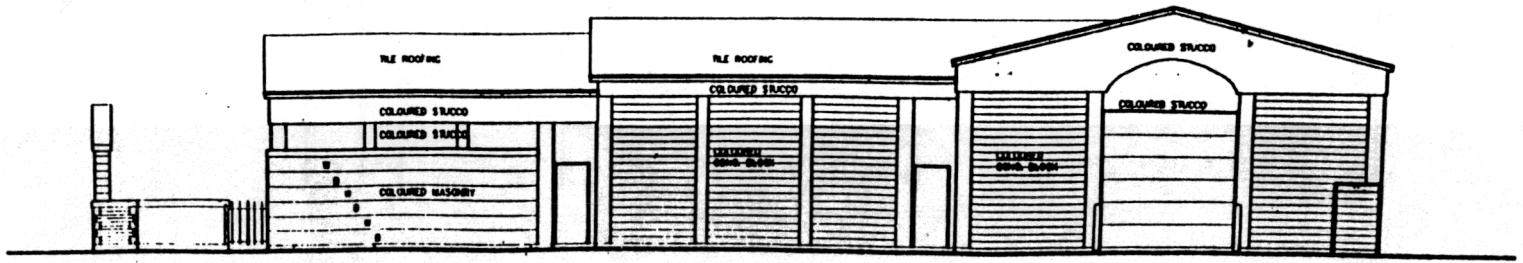
APPENDIX II



NORTH ELEVATION



SCALE IN METRES



2803