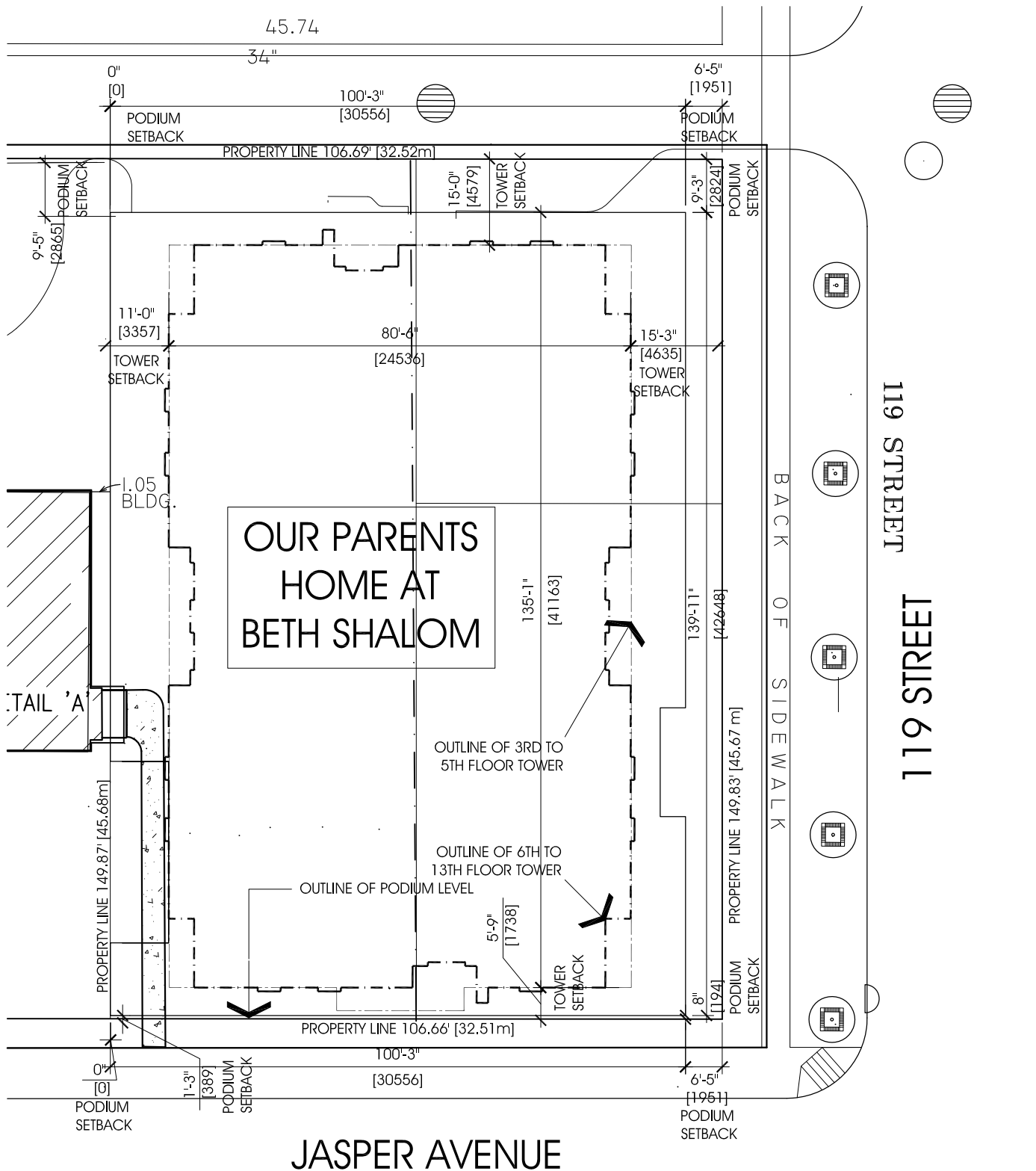


# Appendix A



Site Plan

# Appendix A



SOUTH

# Appendix A



NORTH

# Appendix A



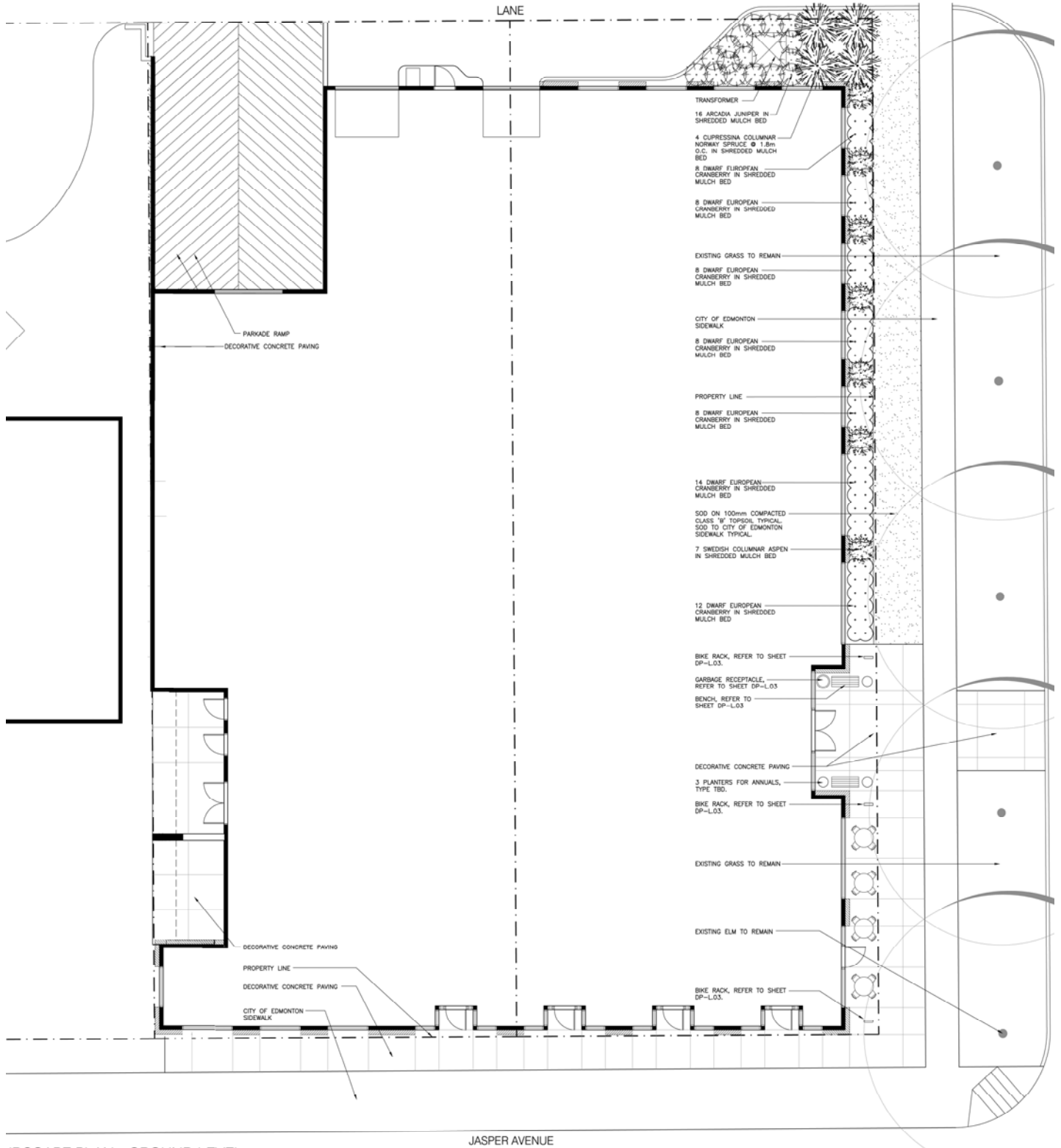
WEST

# Appendix A



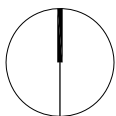
EAST

# Appendix B



LANDSCAPE PLAN - GROUND LEVEL

CONCEPTUAL INTERIOR DESIGN URBAN PLANNING ARCHITECTURE INTERIOR DESIGN URBAN PLANNING ARCHITECTURE



## Landscape Plan

Appendix C Sustainable Strategies and Targets

<b>Design Components</b>	<b>Sustainable Initiative</b>	<b>Specific Target</b>
Sustainable Sites	Stormwater Management	The development shall implement a stormwater management plan that results in a 20% decrease in the rate and quantity of storm water runoff when compared to the existing site.
	Heat Island Effect	A minimum of 50% of the building roof area shall be covered with high emissivity roofing (emissivity of .9 or greater), vegetated roofing, or a combination thereof.
	Light Pollution Reduction	The development shall avoid light trespass from the building and site onto neighbouring properties, with the exception of adjacent public areas requiring lighting for reasons of security and shall meet or exceed the requirements of the Illuminating Engineering Society of North America (IESNA RP-33-99).
Water Efficiency	Water Efficient Landscaping	The design shall apply high-efficiency irrigation technology, captured rain water, and/or drought tolerant landscaping to reduce potable water consumption for irrigation by 40% over conventional means, factored over the course of a typical year.
	Innovative Wastewater Technologies	The design shall reduce the use of municipally provided potable water for building sewage conveyance by 20% as calculated per the Canadian Green Building Council LEED Reference Guide 2009 (not including irrigation).
Energy and Atmosphere	Reduced Energy Consumption	The design shall reduce energy consumption by 20% over the comparable Canadian Model

		National Energy Code Building (1997).
	Lighting	Lighting in all residential common areas and commercial areas shall exceed the efficiency specified in the Model National Energy Code for Buildings by 10% (1997).
Materials and Resources	Recycled Content	The design shall specify building materials such that 5% of the total value of materials used in the development consists of post-industrial and post-consumer recycled materials.
	Regional Matters	The design shall specify building materials such that 50% of all aggregates used in the development are extracted, processed and manufactures within 800 km of the development.
Indoor Environmental Quality	Low-Emitting Materials	The design shall specify paints with VOC emissions that do not exceed the VOC and chemical component limits of Green Seal's Standards SS-11 January 1997 requirements or acceptable alternative standards.