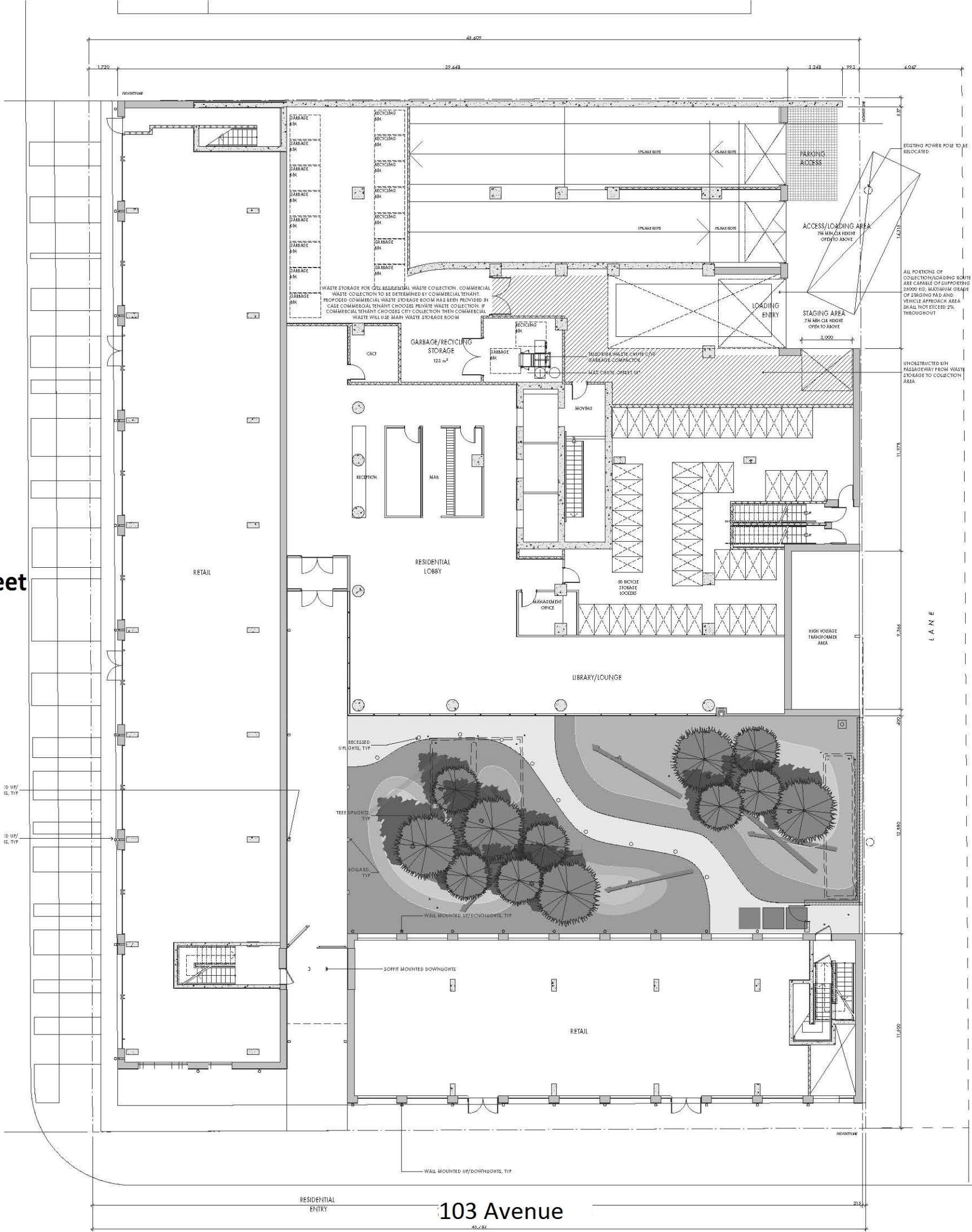
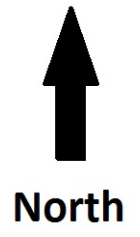


Appendix I - Site Plan



106 Street

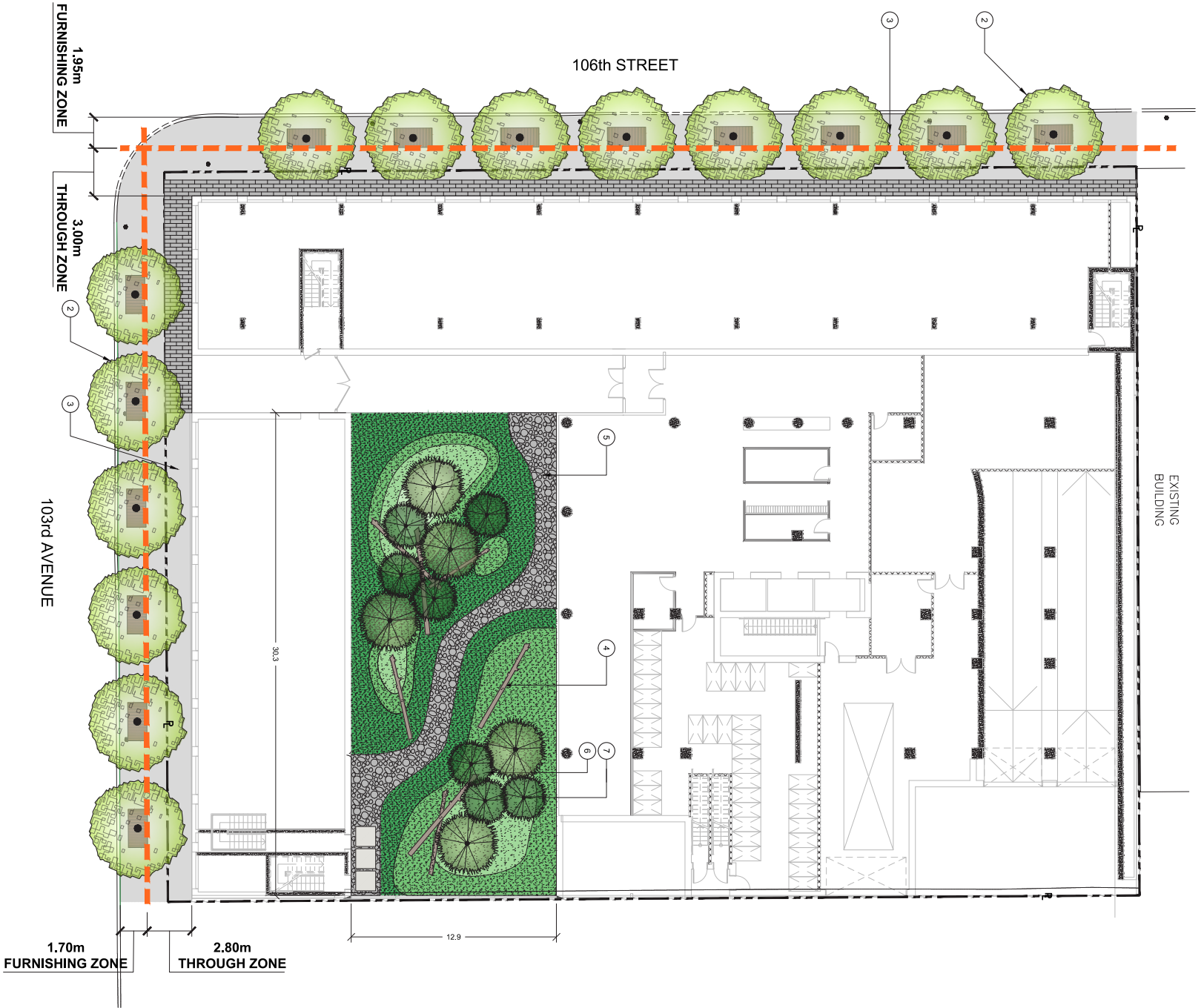


103 Avenue

Appendix II - Landscape Plan

2018-09-17 7:00pm By: jmatthews
 N:\Projects\141101 Lamb Edmonton North Landscape Architecture\06 - Concept Design\01 - CAD\Paperspace Layout\L0.10 SITE PLAN.dwg

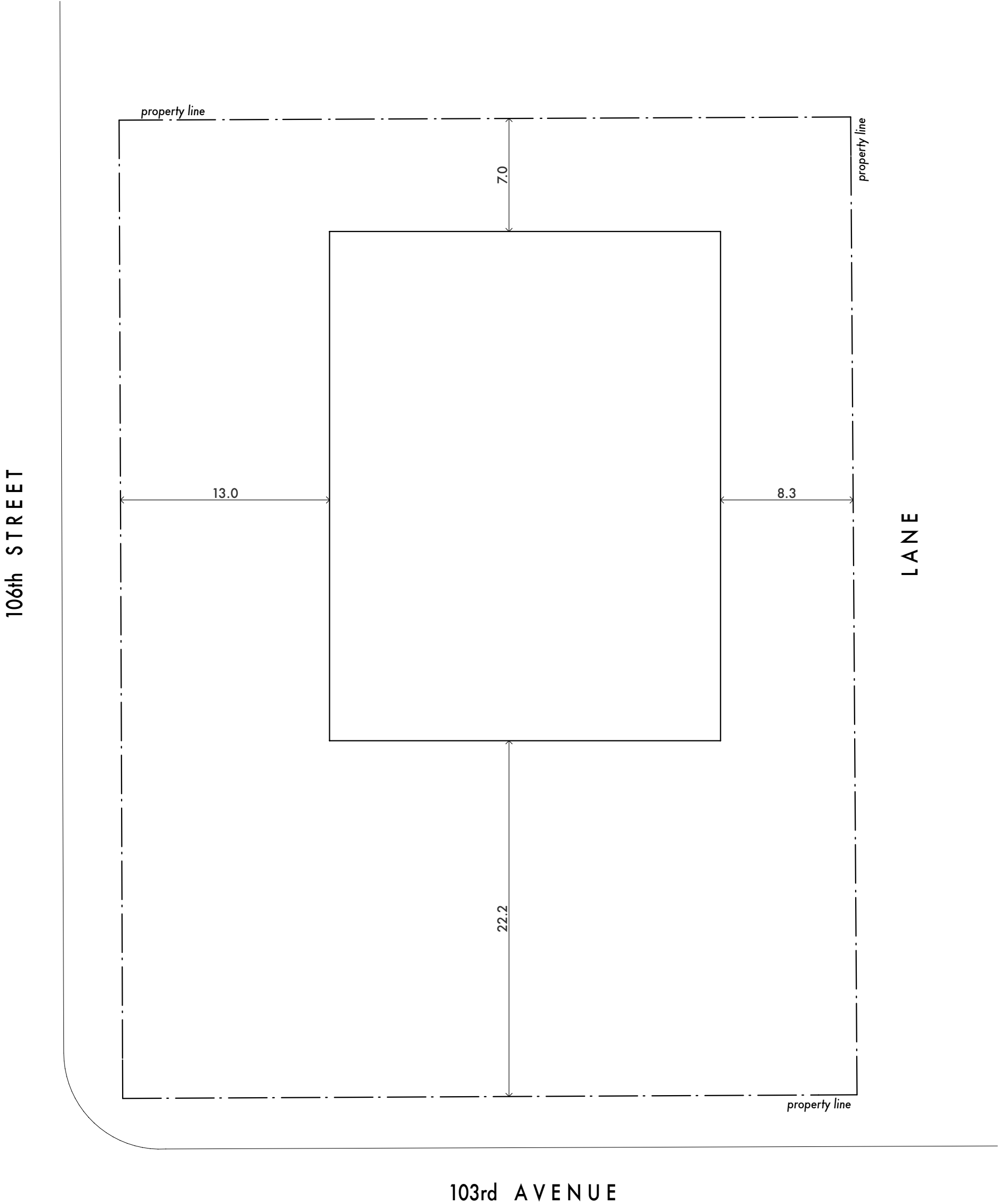
1 SITE PLAN
 00/00 / 1/50



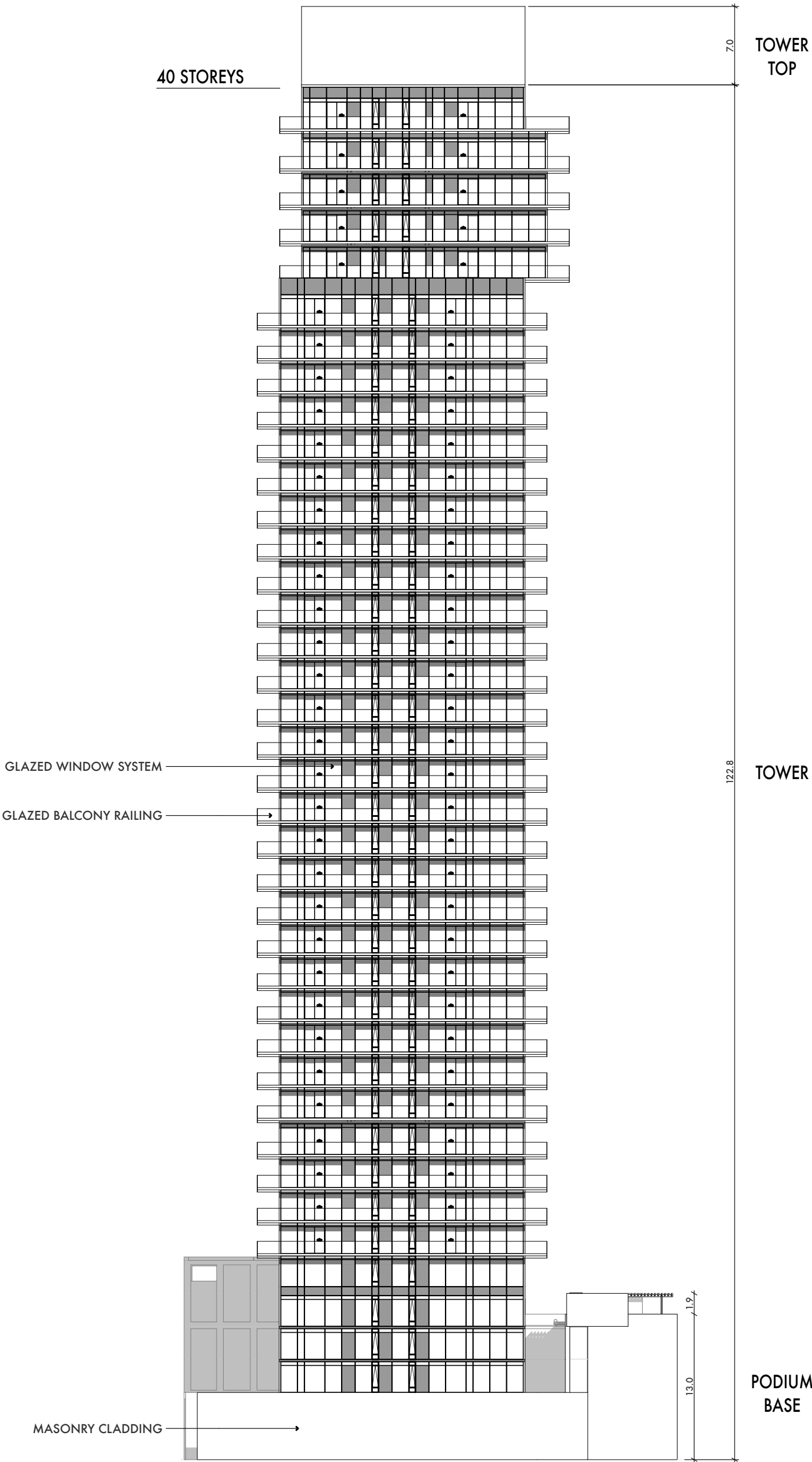
REFERENCE NOTES SCHEDULE

SYMBOL	DESCRIPTION
1	GENERAL APPROACH: 1. THE COURTYARD IS DESIGNED TO PROVIDE ENTICING VIEWS THAT CAPTURE THE ESSENCE OF THE NORTH FROM THE ENTRY CORRIDOR LIBRARY AND THE CORRIDORS IN THE UPPER LEVELS.
2	2. GIVE THE AMOUNT OF AVAILABLE LIGHT. THE NUMBER OF TREES MUST BE KEPT LOW BECAUSE THE TREES ARE CONIFERS EVERGREENS. AN INFORMAL GROUPING OF TREES IS FAVOURABLE TO A GRID BECAUSE THE TREES WILL GROW AT DIFFERENT RATES, AND CANNOT BE MAINTAINED AT A UNIFORM SIZE AND SHAPE THROUGH PROXIMITY LINE DEPENDOUS TREES.
3	3. STREET TREES - PER CITY LANDSCAPE STANDARD
4	4. STREETScape - PER CITY LANDSCAPE STANDARD
5	5. FALLEN NURSE LOGS TO CREATE NORTHERN FEEL.
6	6. GRAVEL VALLEY ALLUDERS TO RIVER VALLEY
7	7. MOUNDED TERRAIN, CW SHADE TOLERANT MOSSES AND GROUNDCOVERS. HEIGHT APPROX. 1200mm @ TREES. BUILT UP AGAINST NON-GLAZED WALLS IF POSSIBLE 8. BALSAM FIR OR DOUGLAS FIR TREES ISLAND TO CREATE NORTHERN FEEL. PLANTED IN TIGHT FOREST FORMATION ON TOP OF MOUND.

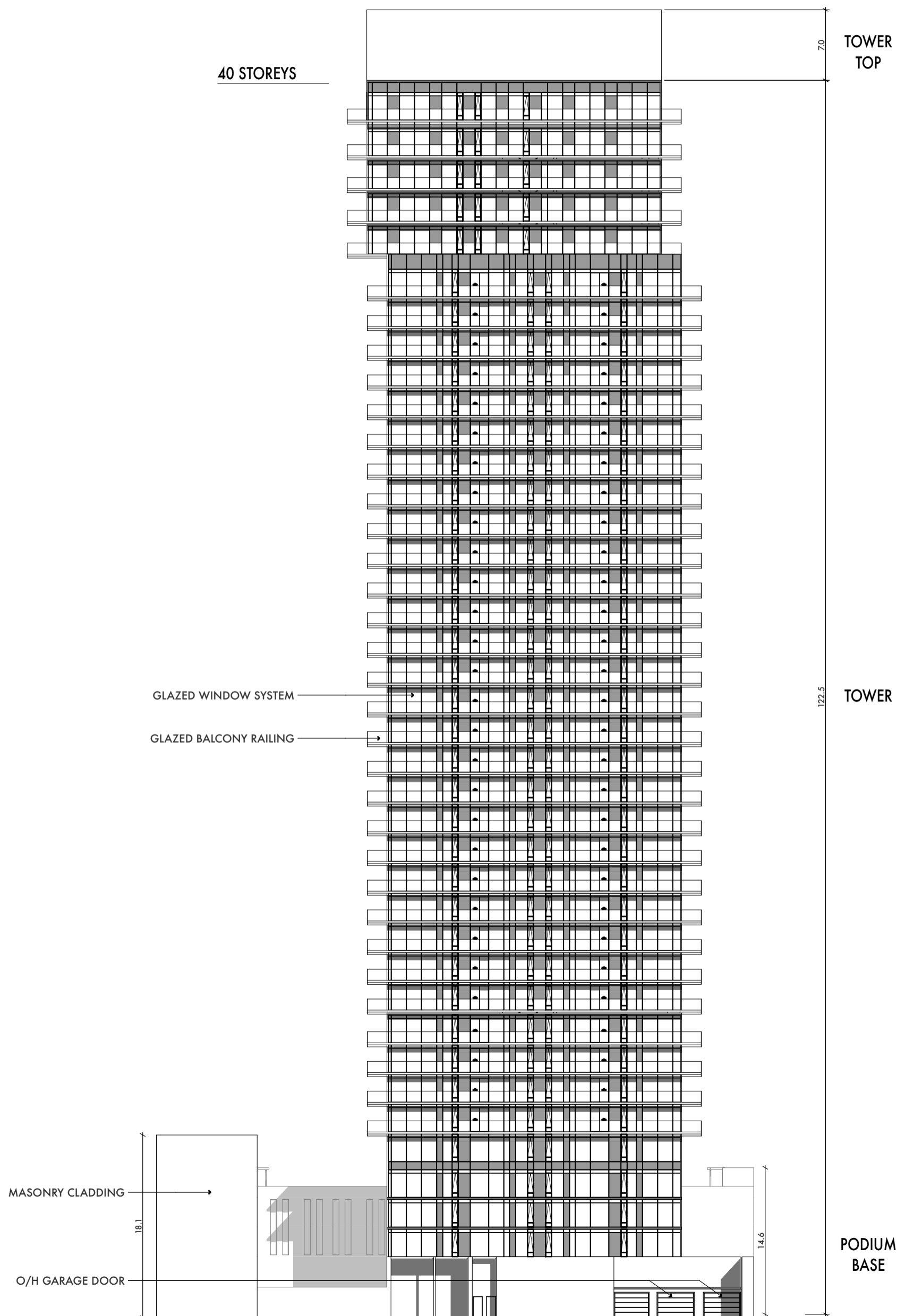
Appendix III - Tower Setbacks



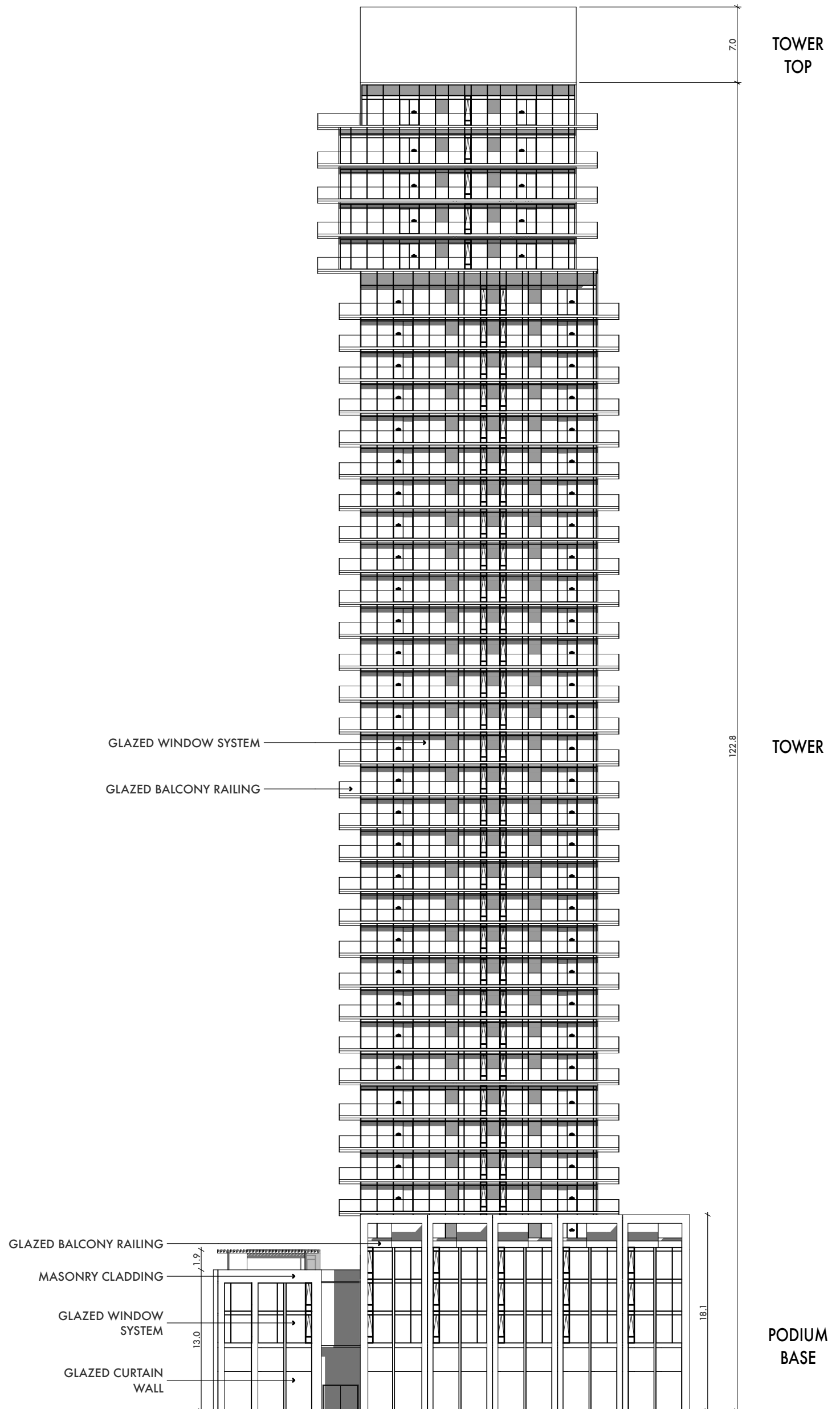
Appendix IV - North Elevation



Appendix V - East Elevation



Appendix VI - South Elevation



Appendix VII - West Elevation

