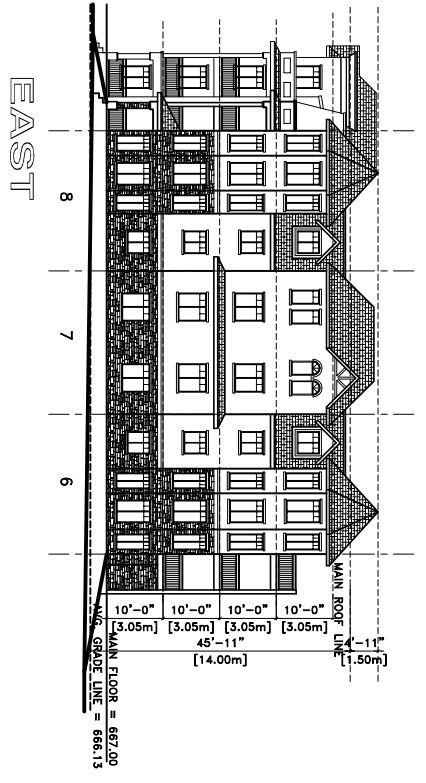


NORTH(LANE)



EAST

THE NORTH/EAST ELEVATIONS WILL HAVE 8 DISTINCT VERTICAL ELEMENTS THAT INCLUDE DIFFERENTIATION IN MATERIAL (STONE, ACRYLIC STUCCO & GLASS), COLORS (5 EARTHTONES), 6 BLACK TRANSOM WINDOW STYLES AS ILLUSTRATED WITH 4" PREFINISHED ACCENT COLOR ACRYLIC STUCCO TRIM, 4 BALCONY STYLES AND VARIATION IN ROOF LINES AS ILLUSTRATED.

NORTH & EAST ELEVATIONS

APPENDIX III