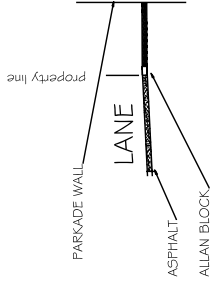


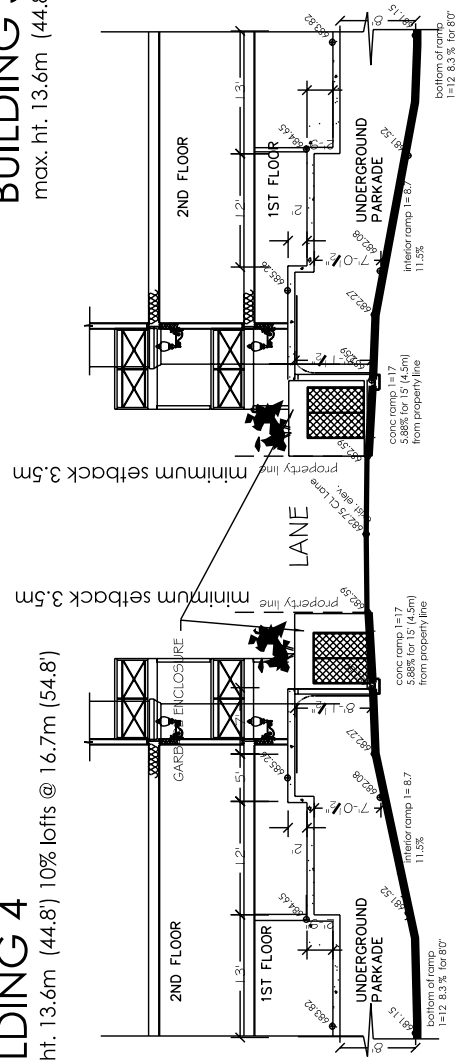
Lane Cross Section Details



North Building Cross Section

BUILDING 3
max. ht. 13.6m (44.8')

BUILDING 4
max. ht. 13.6m (44.8') 10% lofts @ 16.7m (54.8')



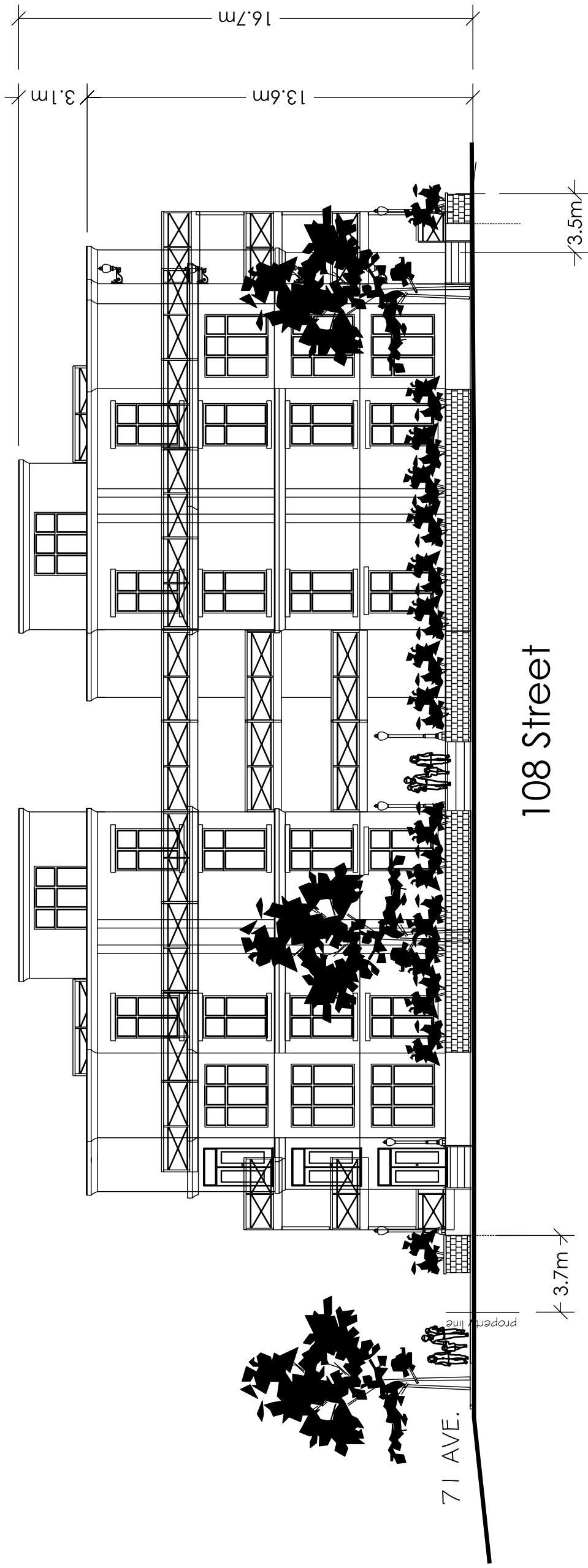
Parkade Ramp Section
Appendix II Cross Sections

BUILDING 5 & 6

max. ht. 13.6m (44.8') 10% lofts @ 16.7m (54.8')

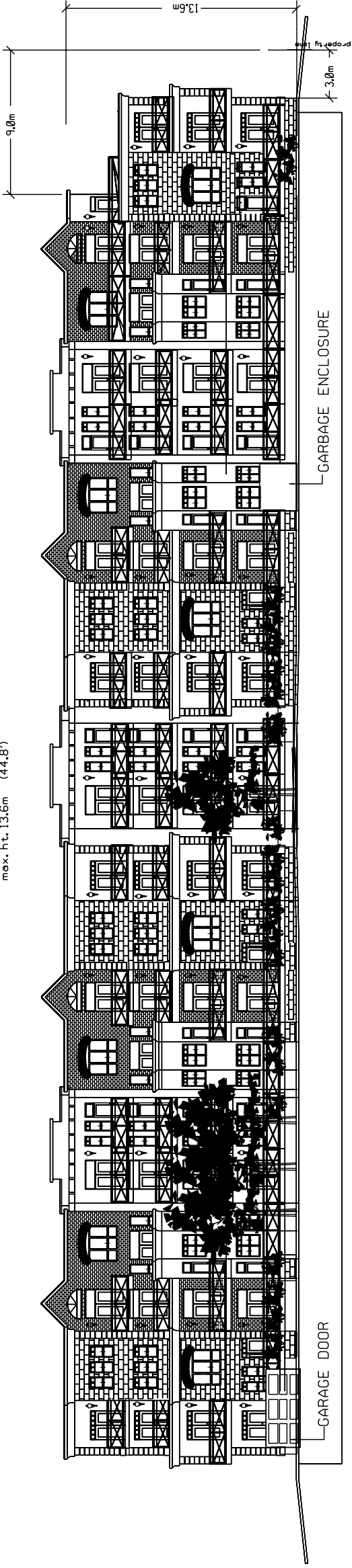
BUILDING 4

max. ht. 13.6m (44.8') 10% lofts @ 16.7m (54.8')



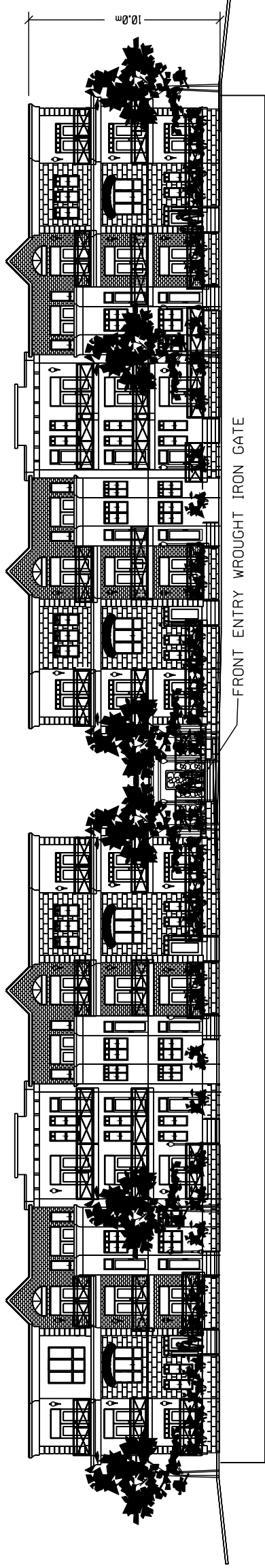
Appendix III 108 Street Elevation

BUILDING 3
max. ht. 13.6m (44.8')



SOUTH ELEVATION (LANE)

BUILDING 1
max. ht. 10 m (32.8')

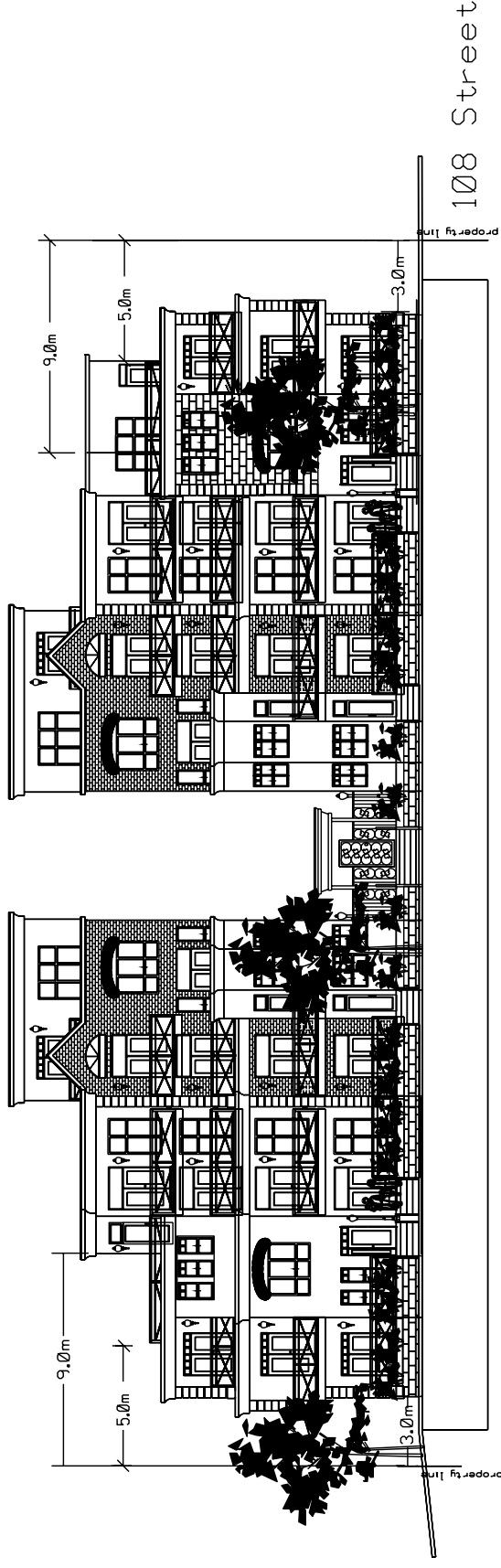


NORTH ELEVATION (72 AVE.)

BUILDING 2
max. ht. 10 m (32.8')



BUILDING 5 & 6
max. ht. 13.6m (44.8') 10% lofts @ 16.7m (54.8')



SOUTH ELEVATION - 71 Ave.

BUILDING 4
max. ht. 13.6m (44.8') 10% lofts @ 16.7m (54.8')



NORTH ELEVATION - LANE

PLANT LIST

KEY IDTY.	BOTANICAL NAME	COMMON NAME	SIZE	SPACE	COND.
TREES					
a1	4 PICEA PLUNGENS	COLORADO SPRUCE	2500mm HT.	AS SHOWN	R&B
a2	3 PICEA PLUNGENS	COLORADO SPRUCE	2500mm HT.	AS SHOWN	R&B
b	44 POPULUS TREHULLA ERECTA	SWEDISH COLUMNAR ASPEN	75mm CAL.	AS SHOWN	R&B
d	6 SORBUS AUCUPARIA ROSSICA	RUSSIAN MOUNTAIN ASH	50mm CAL.	AS SHOWN	R&B
SHRUBS					
b	15 CORNUS ALBA 'BAHALO'	IVORY HALO DOGWOOD	900mm HT.	AS SHOWN	CONT.
b	18 COTONEASTER LUCIDUS	HEDGE COTONEASTER	900mm HT.	AS SHOWN	CONT.
d	36 HYDRANGEA PANICULATA	LINEIGHT HYDRANGEA	900mm HT.	AS SHOWN	CONT.
9	15 JUNIPERUS HORIZONTALIS 'CALGARY CARPET'	CALGARY CARPET JUNIPER	900mm SP.	AS SHOWN	CONT.
f	19 PHYSCOCARPUS OPAULIFOLIUS 'DARTS GOLD'	DARTS GOLD NINEBARK	900mm HT.	AS SHOWN	CONT.
9	30 PHYSCOCARPUS OPAULIFOLIUS 'SEWARD'	SUMMERWINE NINEBARK	900mm HT.	AS SHOWN	CONT.
h	29 RIBES ALPINUM 'SCHMIDT'	ALPINE CURRANT	900mm HT.	AS SHOWN	CONT.
i	46 SPIRAEA BUJALDA 'GOLDFLAME'	GOLDFLAME SPHREA	900mm HT.	AS SHOWN	CONT.
PERENNIALS					
na	AEGEOPIDIUM PODAGARIA 'VARIEGATUM'	GOUTWEED	150mm POT	AS SHOWN	CONT.
nb	18 HEMEROCALLIS X HYBRIDA	DAYLILLY	150mm POT	AS SHOWN	CONT.
cc	12 HOSTA SPP. FRANCES WILLIAMS	FRANCES WILLIAMS HOSTA	150mm POT	AS SHOWN	CONT.

LANDSCAPE CALCULATIONS

SETBACKS	DIMENSIONS	AREA	TREES	SHRUBS
72 AVENUE				
NORTH PROPERTY LINE	3.7m x 85.4m	315.98m ²	12.4	20.8
EAST PROPERTY LINE	3.0m x 40.2m	120.6m ²	4.8	8.0
SOUTH PROPERTY LINE	3.5 x 85.4m	298.9m ²	11.9	19.9
WEST PROPERTY LINE	2.4m x 40.2m	96.5m ²	3.9	6.4
71 AVENUE				
NORTH PROPERTY LINE	3.5m x 48.9m	184.63m ²	6.9	11.6
EAST PROPERTY LINE	3.0m x 40.2m	120.6m ²	4.8	8.0
WEST PROPERTY LINE	3.0m x 40.2m	120.6m ²	4.8	8.0
SOUTH PROPERTY LINE	3.7m x 48.9m	182.1m ²	7.2	12.1
REQUIRED			56.7	94.8
PROVIDED			58	100
TOTAL			58	100

NOTE: CALCULATIONS BASED ON ONE TREE PER 25m² OF LANDSCAPED AREA & ONE SHRUB PER 15m² OF LANDSCAPED AREA

LEGEND

- PROPERTY LINE
- EXISTING 6' WOOD FENCE
- METAL EDGER
- 75mm DEPTH FIBERGLASS BARK MULCH OVER PREEMERGENT PESTICIDE
- 37mm ALBERTA RAINBOW FLOCK MULCH TO 30mm DEPTH - OVER 500 WEED BARRIER FABRIC
- SOD OVER 150mm TOPSOIL
- PATTERN CONCRETE PATIO & WALKWAYS
- EXISTING BOULEVARD TREES

