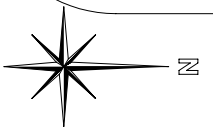
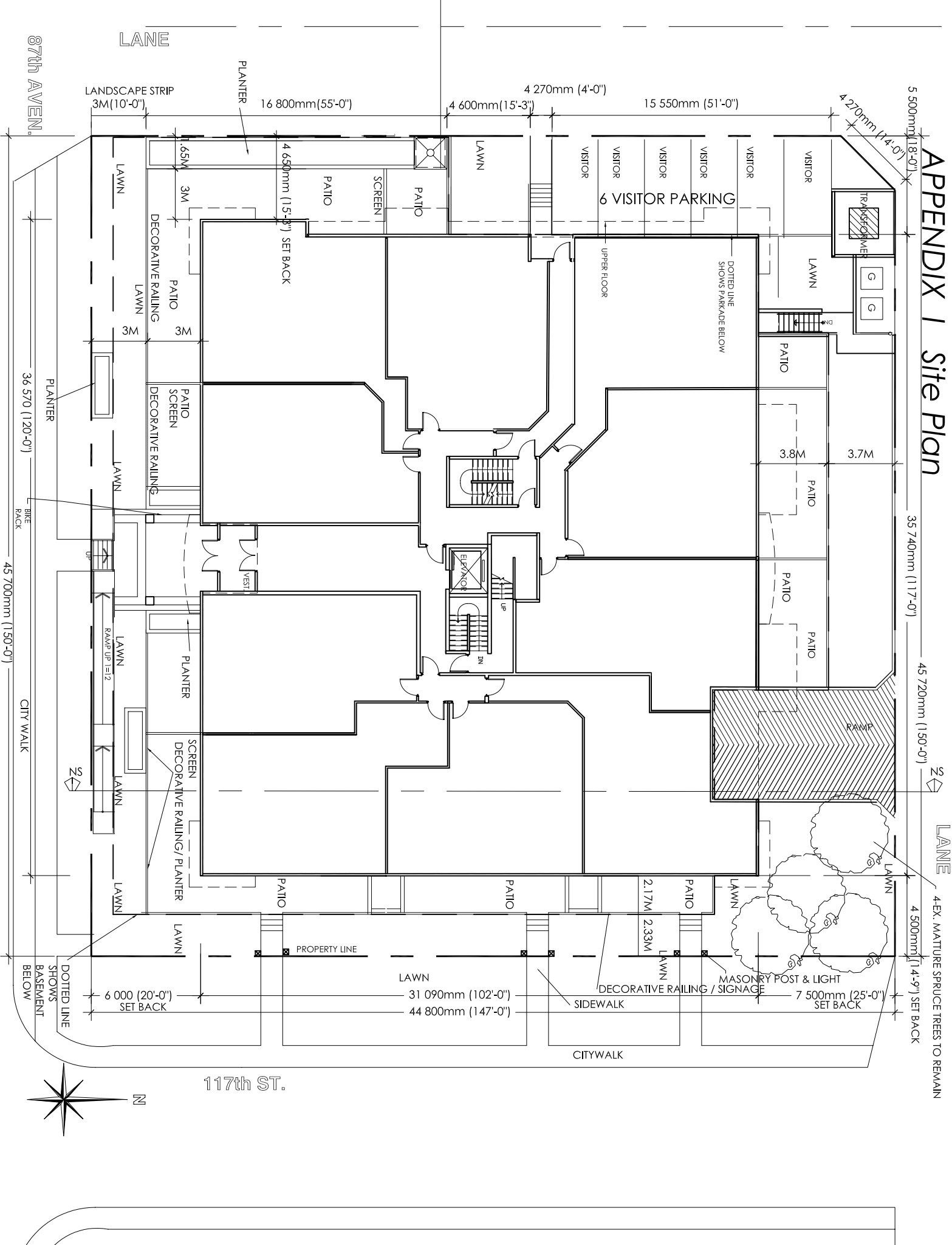


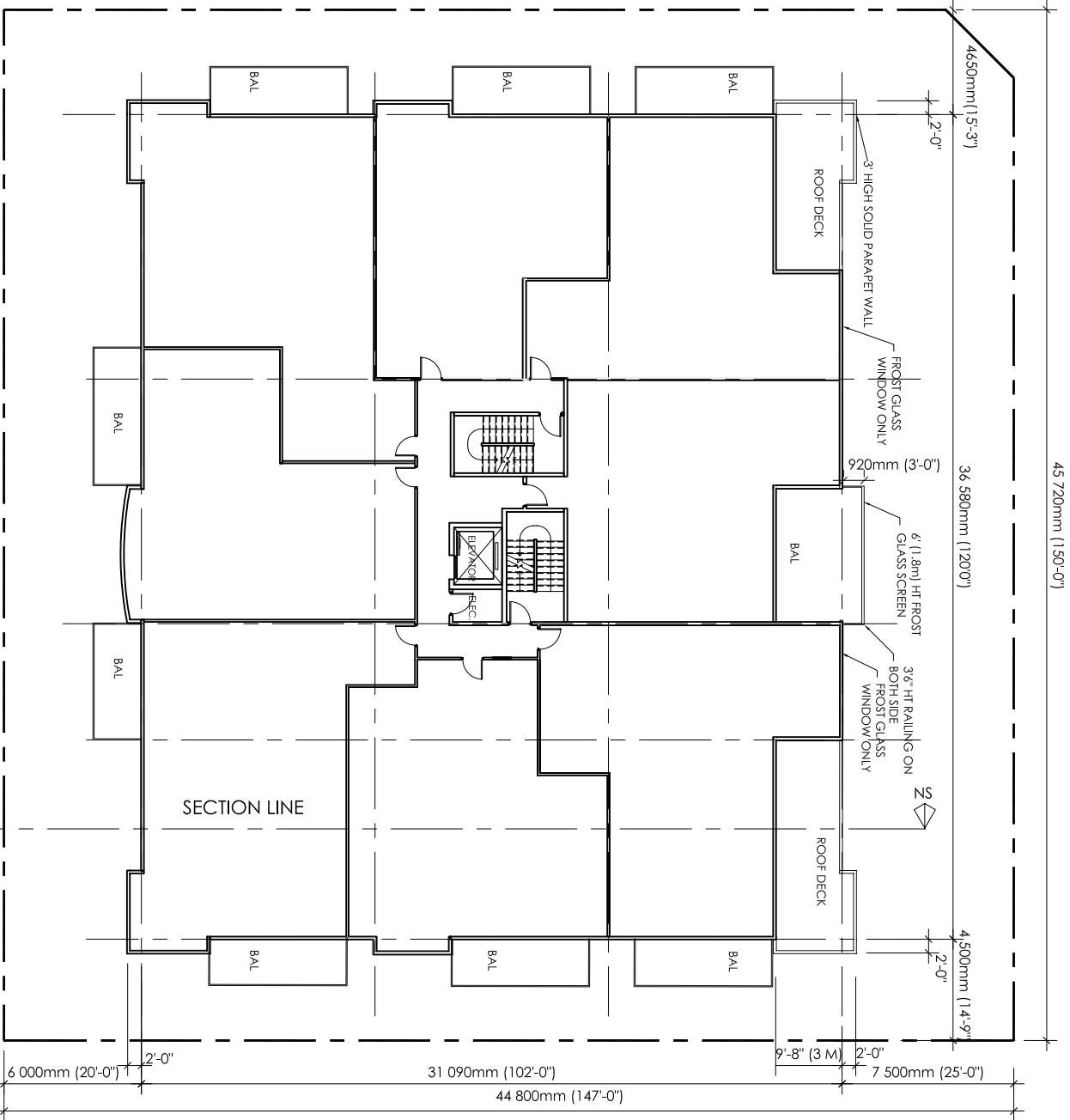
APPENDIX 1 Site Plan



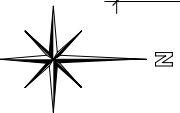
117th ST.

LANE
4 EX. MATURE SPRUCE TREES TO REMAIN

APPENDIX 1a Fourth Floor Plan



FOURTH FLOOR PLAN

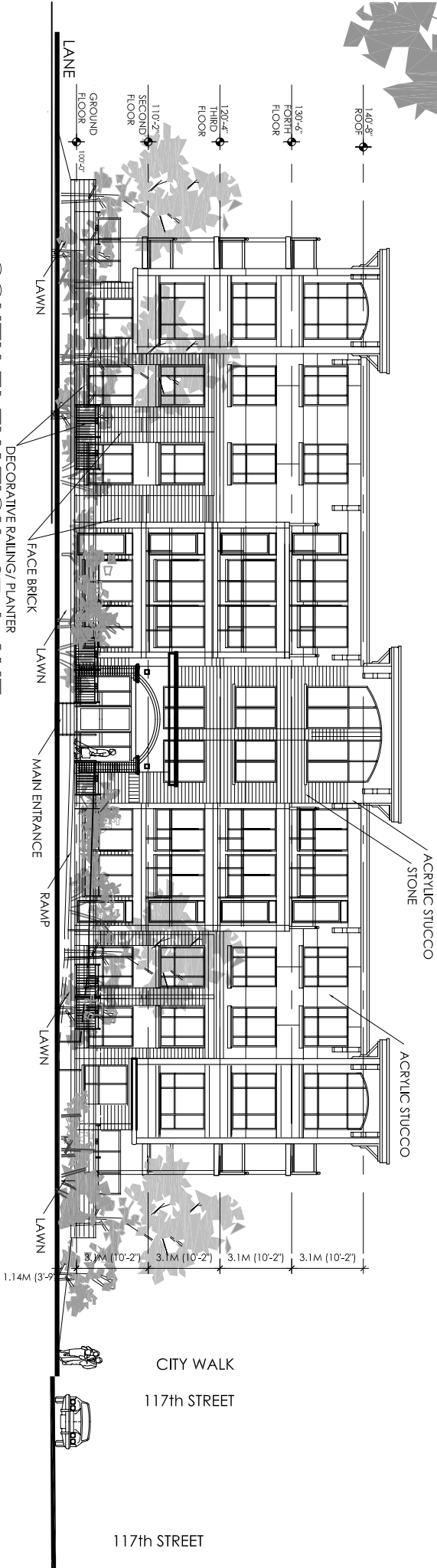


APPENDIX II Elevation

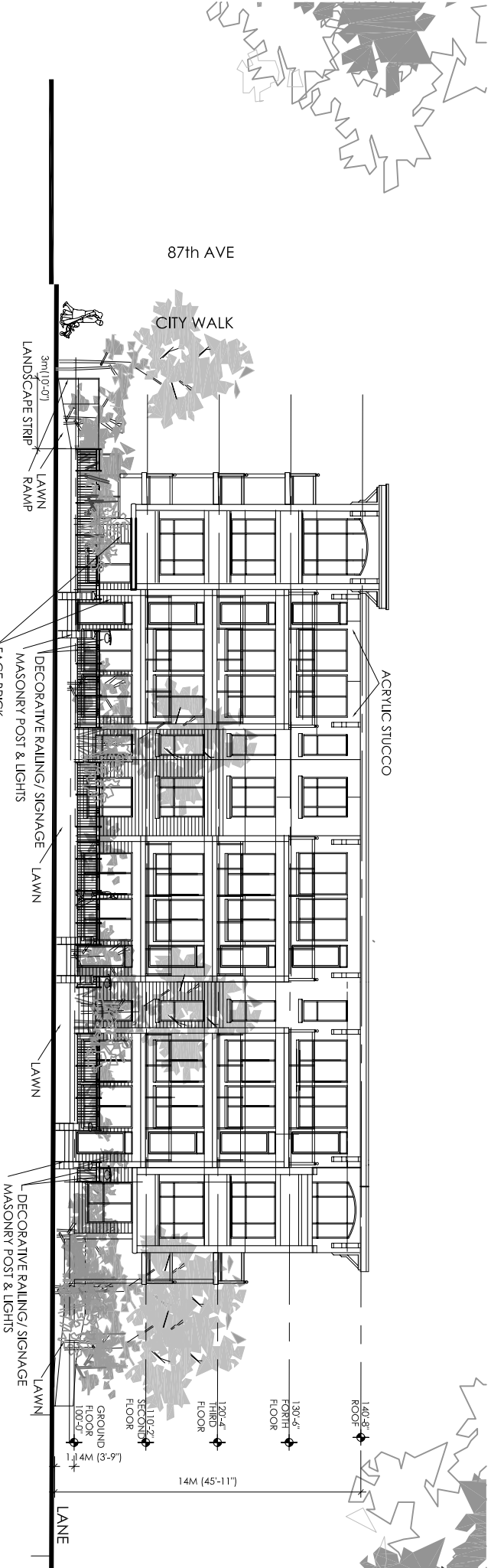


APPENDIX II Elevations

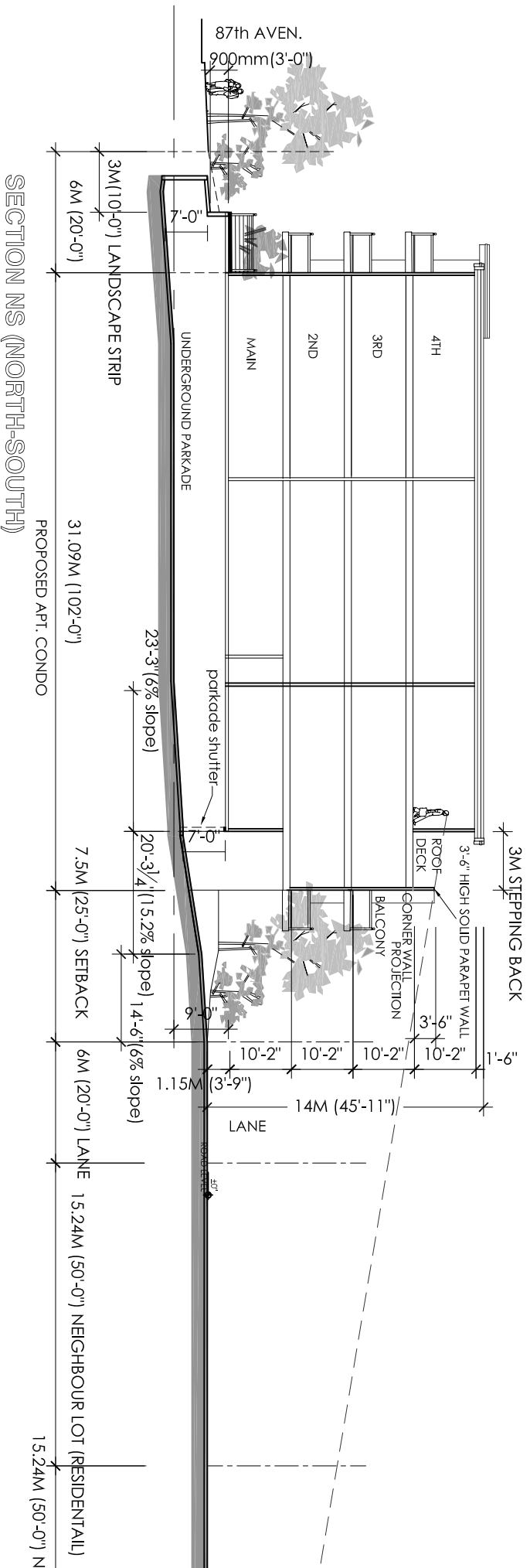
SOUTH ELEVATION - 87th AVE



EAST ELEVATION - 117TH ST.



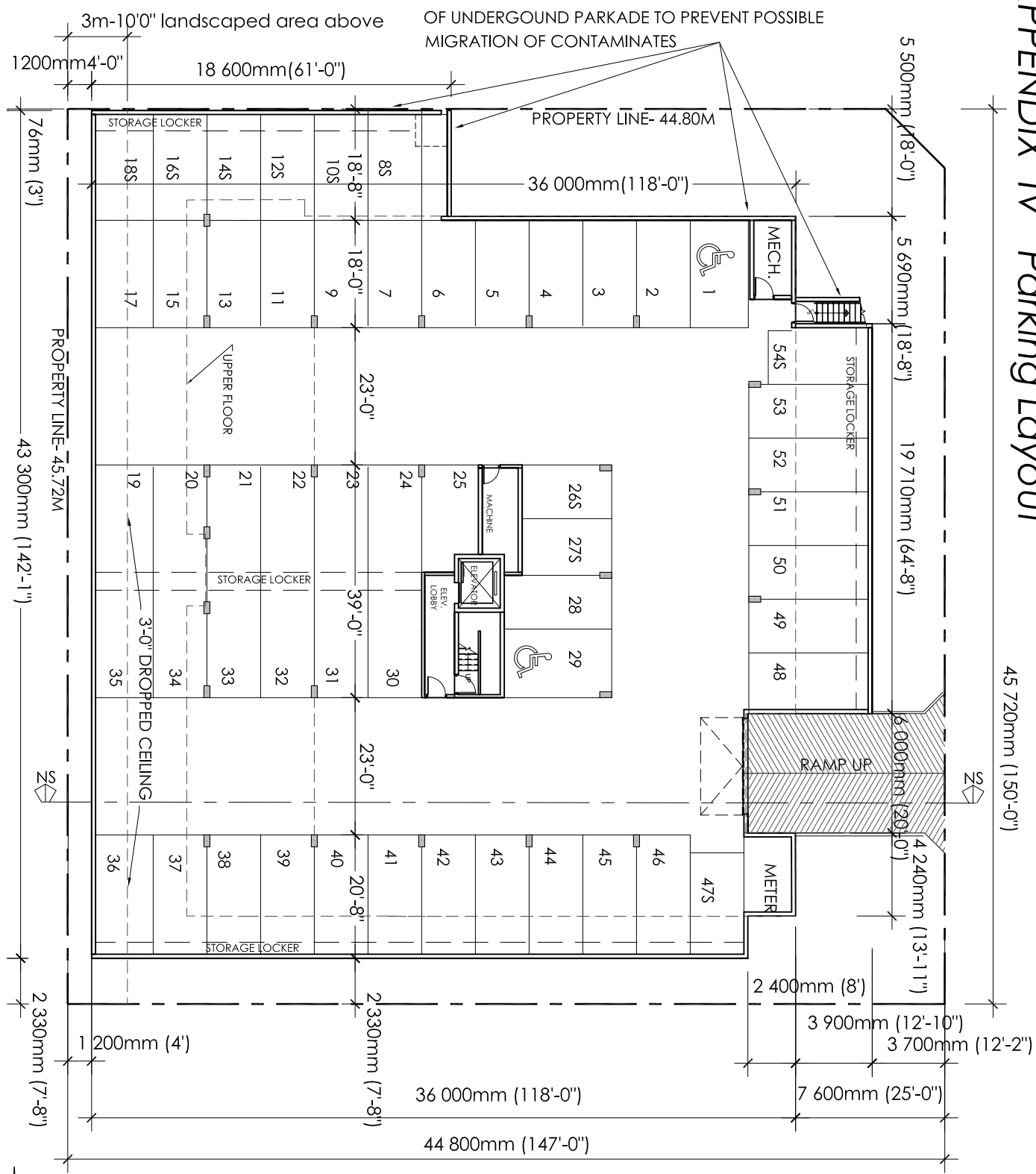
APPENDIX III Section



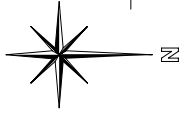
APPENDIX IV Parking Layout

45 720mm (150'-0")

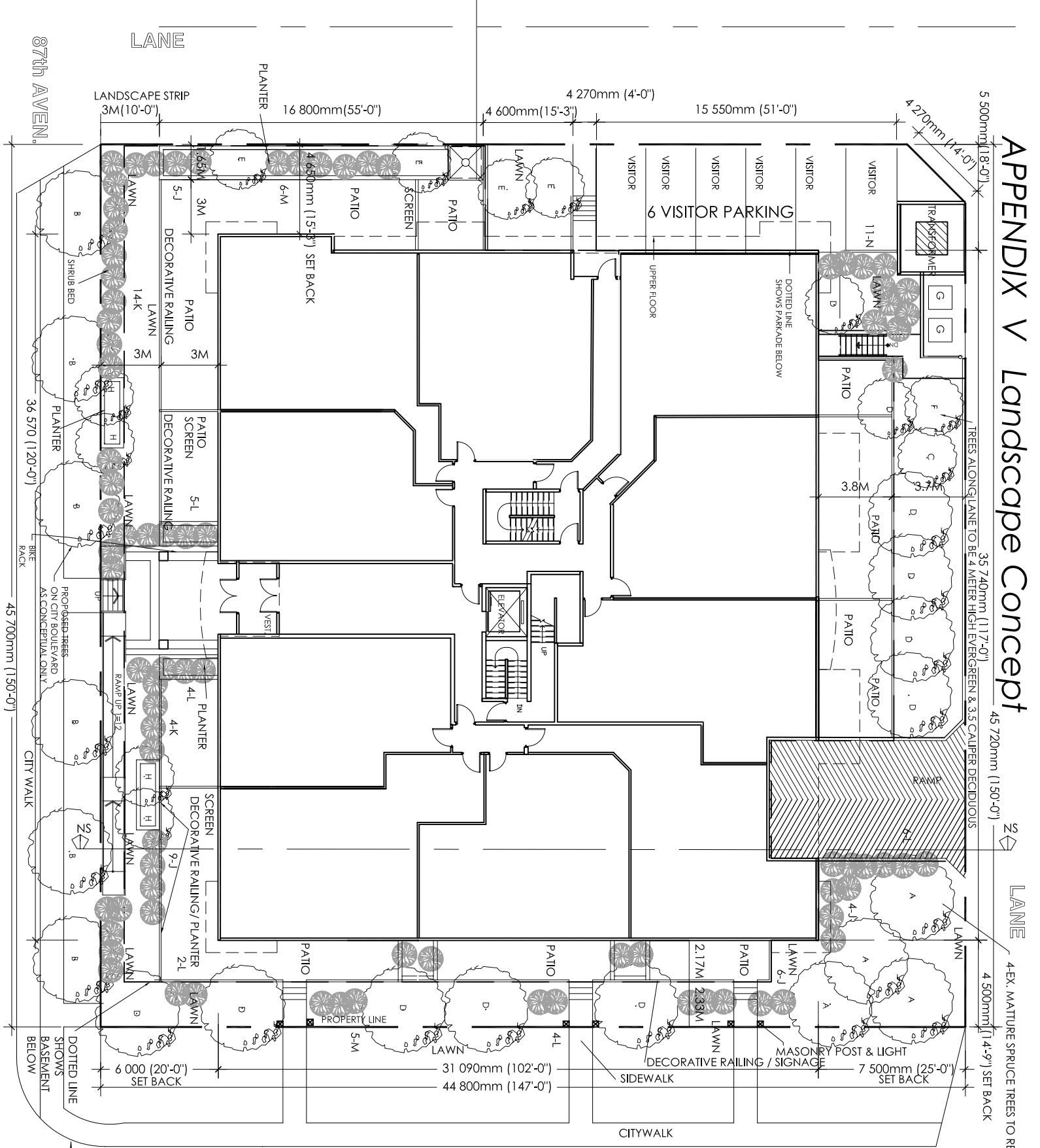
PROVIDE LINER TO FULL DEPTH OF EXCAVATED WEST WALL OF UNDERGROUND PARKADE TO PREVENT POSSIBLE MIGRATION OF CONTAMINATES



UNDERGROUND PARKADE



APPENDIX V Landscape Concept



35 740mm (117'-0")
TREES ALONG LANE TO BE 4 METER HIGH EVERGREEN & 3.5 CALIPER DECIDUOUS

45 720mm (150'-0")

LANE
4-EX. MATURE SPRUCE TREES TO REMAIN
4 500mm (14'-9") SET BACK

87th AVEN.

45 700mm (150'-0")

CITY WALK

BIKE RACK

6 000 (20'-0") SET BACK
DOTTED LINE SHOWS BASEMENT BELOW

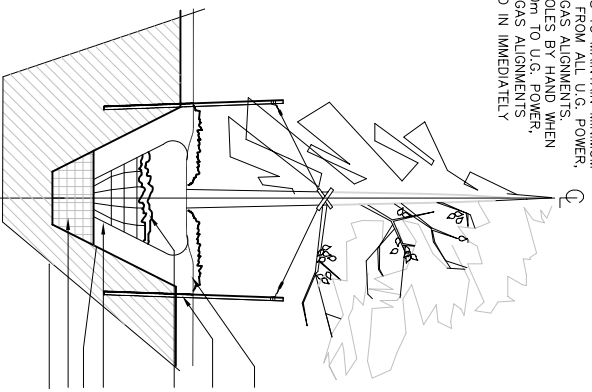


117th ST.



APPENDIX V Landscape Detail

1. POSITION TREE STAKES INTO DIRECTION OF PREVAILING WINDS.
2. ALL TREE STAKES TO MAINTAIN MINIMUM 1.0m CLEARANCE FROM ALL U.G. POWER, TELEPHONE AND GAS ALIGNMENTS.
3. DIG ALL ROOT HOLES BY HAND WHEN CLOSER THAN 1.0m TO U.G. POWER, TELEPHONE AND GAS ALIGNMENTS
4. SOAK PLANT BED IN IMMEDIATELY AFTER PLANTING.



Typical Tree Planting Detail

PRUNE ONLY DEAD, BROKEN, OR DISEASED TREE LIMBS.

BLACK RUBBER HOSE 12 MM OR APPROVED EQUAL POSITIONED ABOVE FIRST STRONG BRANCHES OF DECIDUOUS TREES AND APPROX. 3/5 HT. OF CONIFEROUS TREES

GALVANIZED GUY WIRE, NO.12 MINIMUM

2. STAKES PER TREE - ALL EXPOSED PORTIONS OF TREE STAKES FREE OF RUST, SCALED AND PRIMED. TREE STAKES MINIMUM 2100 MM LENGTH STUDDED HEAVYWEIGHT METAL "T"-BAR TREE STAKE SET MIN. 300mm INTO UNDISTURBED SOIL. TOP 300mm OF ALL TREE STAKES PAINTED TO MATCH ANNUAL COLOUR CODES. ANGLE STAKES AT 2:

50 MM MINIMUM DECIDUOUS WOOD CHIP MULCH OR APPROVED EQUAL OVER EXPOSED ROOTBALL. TAPER MULCH TO BASE OF TREE.

CANADA NO.1 SEED MIX OVER 150 MM ROLLED AND COMPACTED CLASS 'B' TOPSOIL.

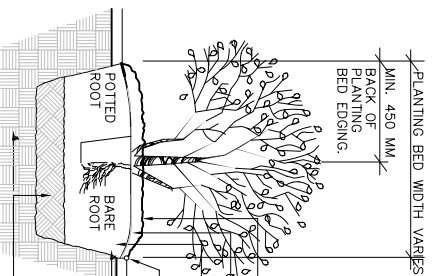
TREE STAKE SET MINIMUM 300 MM INTO UNDISTURBED SOIL.

CUT WIRE BASKET AND BURLAP TO EXPOSE 1/3 TOP OF ROOTBALL. POSITION TOP OF ROOTBALL 50 MM MAXIMUM BELOW FINISH GRADE. REMOVE CUT BASKET AND BURLAP FROM ROOT HOLE.

ROOTBALL MINIMUM SIZE AS PER SPECIFICATIONS. SCARIFY WALL OF TREE WELL.

CLASS 'B' TOPSOIL, LIGHTLY COMPACTED. UNDISTURBED NATIVE SOILS

NOTE:
CONTRACTOR SHALL EXCAVATE SHRUB BED TO MIN. DEPTH OF 300mm TO SHRUB BED LIMITS AS SHOWN ON DRAWINGS.



Typical Shrub Planting Detail

NOTE:
1. PRUNE ONLY DEAD, BROKEN OR DISEASED BRANCHES TO MAINTAIN PROPER SHRUB FORM. DECIDUOUS ONLY.

2. DO NOT ROTOTILL WITHIN 1.0M OF U.G. POWER, TELEPHONE & GAS ALIGNMENTS

3. LANDSCAPE WEED LINER PRIOR TO EXCAVATION FOR SHRUB. CUT WEED LINER AT 120° INTERVALS FROM CENTER OF PROPOSED SHRUB LOCATION. ROLL WEED LINER BACK BEYOND ROOTBALL AND PLANT SHRUB. ROLL WEED LINER BACK. WATER IN AND MULCH AS REQUIRED.

CONIFEROUS OR DECIDUOUS SHRUB.

50 MM DECIDUOUS WOOD CHIP MULCH OR APPROVED EQUAL TAPER MULCH TO BASE OF SHRUB

LANDSCAPE WEED LINER

300mm MIN. DEPTH LIGHTLY COMPACTED CLASS 'B' TOPSOIL

POLYETHYLENE LANDSCAPE EDGING, MINIMUM 150 MM DEPTH.

ROTOTILL 150 MM, ADD TOPSOIL, SAND, AND PEAT, AS PER LANDSCAPE ARCHITECT'S DIRECTION, SPREAD ROOTS EVENLY THROUGHOUT CLASS 'B' TOPSOIL. PRUNE ALL DAMAGED ROOTS

CLASS 'B' TOPSOIL IN PLANTER CONDITION ONLY

PLANT MATERIAL LIST

CODE	BOTANICAL NAME	COMMON NAME	QTY	SIZE
A	Picea pungens	COLORADO SPRUCE	4	EXISTING--mature trees
B	Tilia x flavescens 'Dropanore'	'DROPMORE' LINDEN	6	60 mm CAL.
C	Quercus macrocarpa	BURR OAK	1	50 mm CAL.
D	Pinus contorta latifolia	LODGEPOLE PINE	11	2.0 m HT.
E	Acer ginnala	AMUR MAPLE	4	35 mm CAL.
F	Syrnca reticulata	JAPANESE TREE LILAC	1	30 mm CAL.
H	Prunus pennsylvanica	PINCHERRY	3	35 mm CAL.
J	Symphoricarpos albus	SNOWBERRY	32	45 cm
K	Caragana pygmaea	PYGMY CARAGANA	15	30-40 cm
L	Picea pungens globosa	DWARF GLOBE SPRUCE	21	#5 cont.
M	Pinus mugo	MUGHO PINE	7	#10 cont.
N	Aegopodium podagrana	GOULTWEED	20	2 YEAR OLD

- LANDSCAPING TO COMPLY WITH CITY ZONING REQUIREMENTS

BASE ON EDMONTON ZONING BY-LAW 12800-55

LANDSCAPING

TOTAL REQUIRED YARDS = 10 040.5 FT. SQ.

(150'X20'+150'X25'+102'X149'+102'X18')

NO. OF TREES	REQ'D	PROVIDED	DECIDUOUS	EVERGREEN
NO. OF SHRUBS	27	30	15	15

NO. OF SHRUBS	GROUND COVER	62	72	49	38